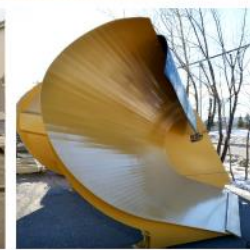




ICE & SNOW PRODUCTS



Welcome



WELDCO-BEALES MANUFACTURING

Weldco was established in 1945 in Vancouver, BC

MANUFACTURING FACILITIES

- **Edmonton – 160,000 sq.ft.**
Services key markets of AB, SK, NWT,
Northern Mid-Western USA markets
- **Langley – 60,000 sq.ft.**
Markets includes BC, YK, & International,
North Western USA markets
- **Barrie – 45,000 sq.ft.**
Gateway to Central/Eastern Canada and
North Eastern USA markets



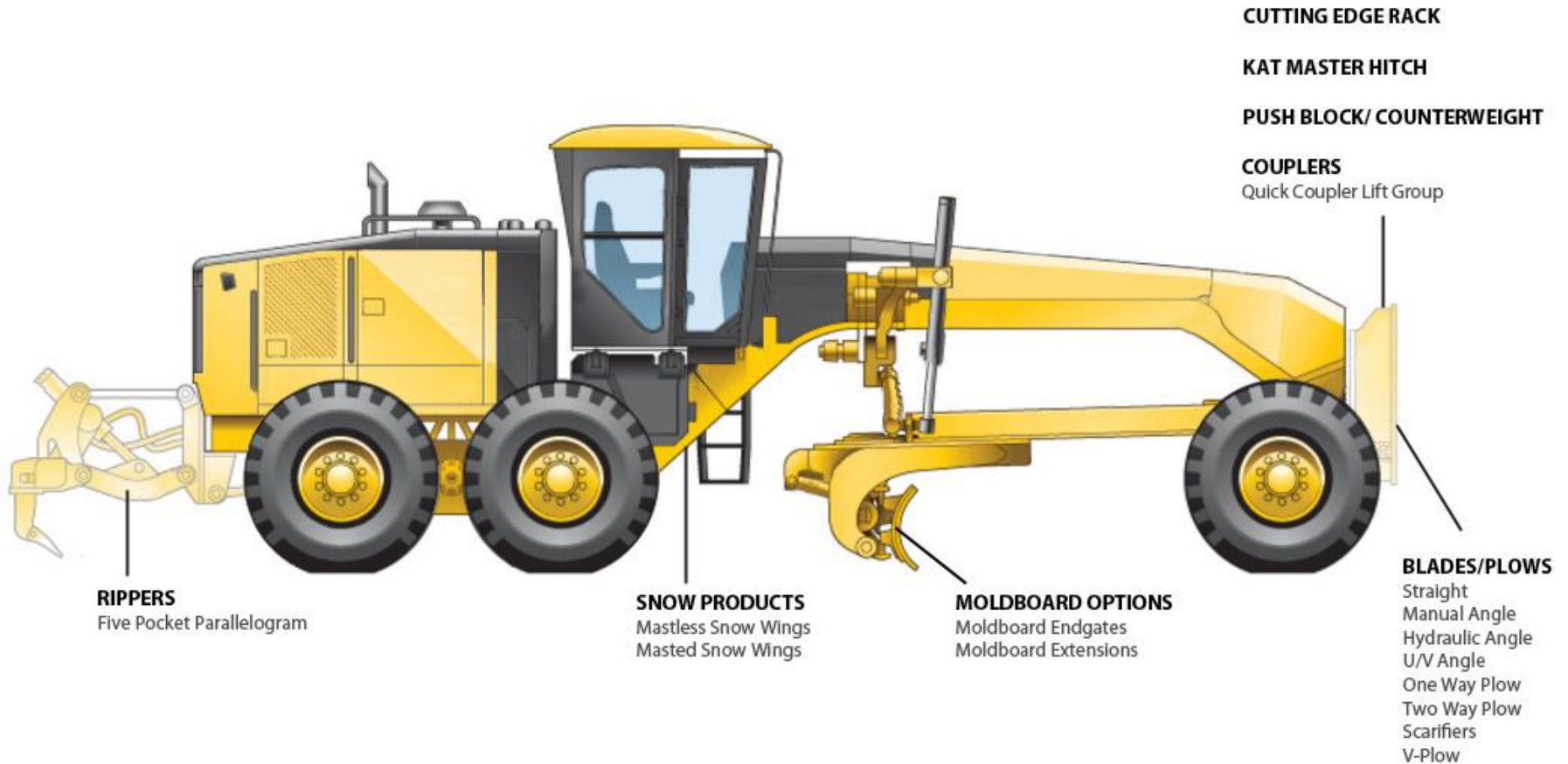
WELDCO-BEALES MANUFACTURING

SPECIALIZING IN SNOW REMOVAL & ROAD MAINTENANCE PRODUCTS

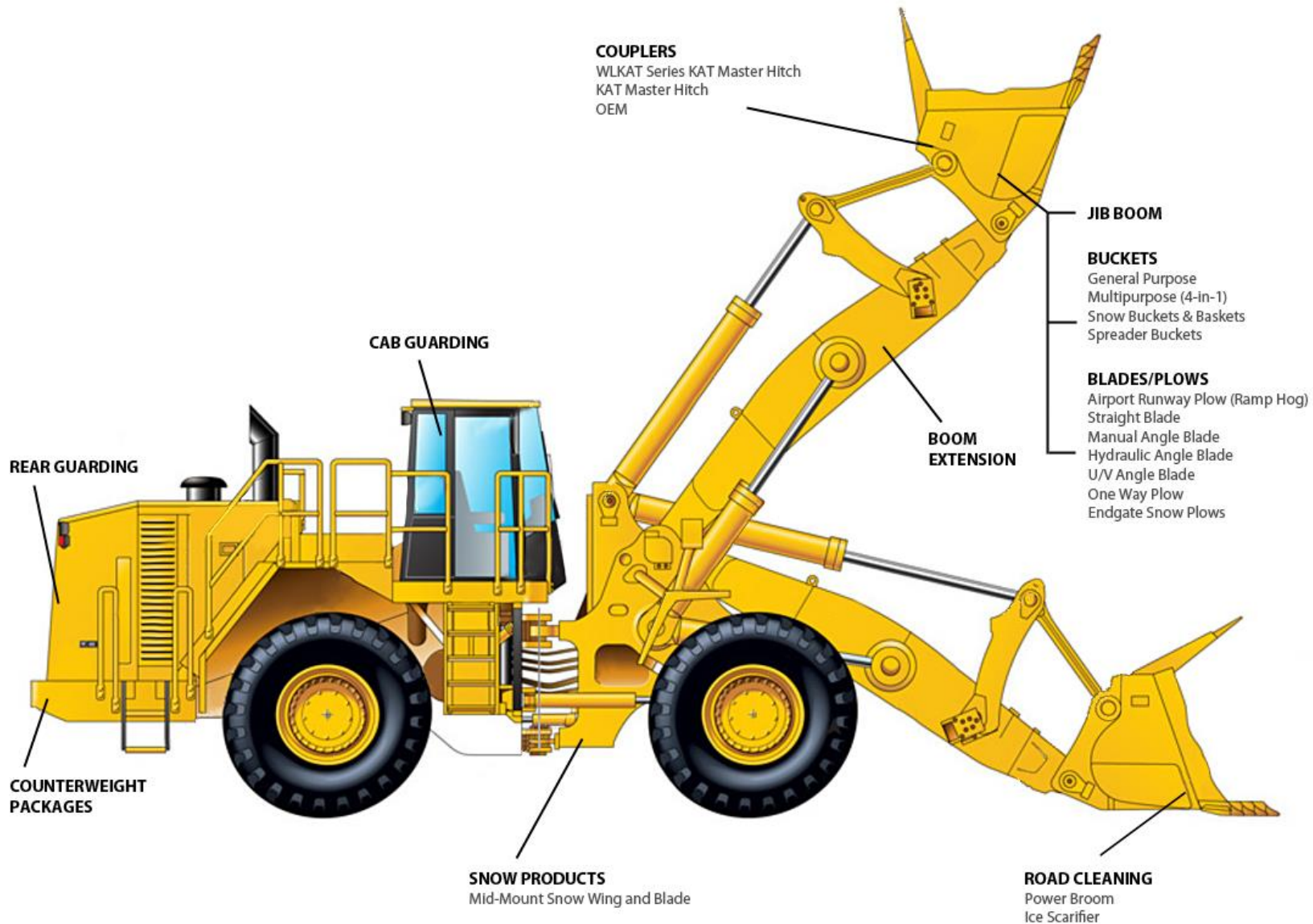
- Specializing in Governmental Sales
- Dedicated Account Managers (AB)
- Consistent and stable market



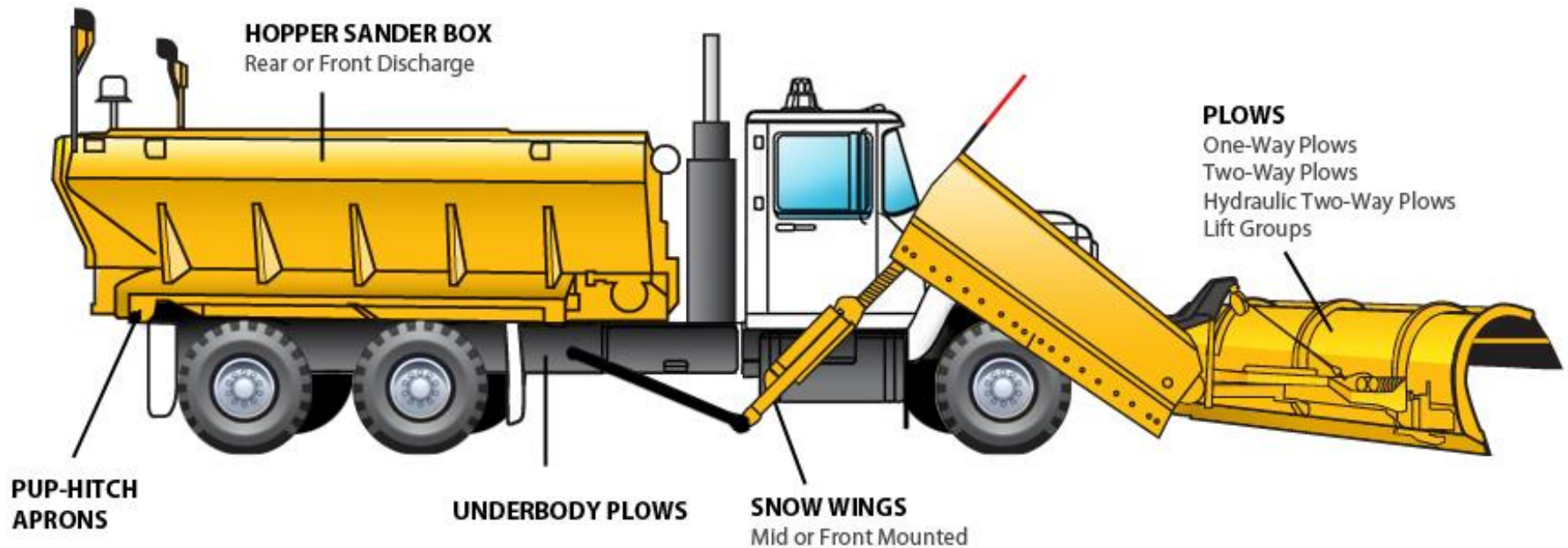
MOTOR GRADER ATTACHMENTS



WHEEL LOADER ATTACHMENTS



TRUCK ATTACHMENTS



FEATURE: TRUCK MID-MOUNTED SNOW WING



FEATURE: TRUCK MID-MOUNTED SNOW WING



FEATURE: TRUCK MID-MOUNTED SNOW WING



3 YEAR WARRANTY

PLOW/SANDER TRUCK EQUIPMENT 3 YEAR WARRANTY FOR QUALIFIED GOVERNMENTAL AGENCIES

WBM warranty will cover its manufactured products for 3 years from the date the product first entered service with its original Motorized carrier.

Government Agencies Include:

- Municipal Districts
- Counties
- Territorial Districts
- Regional Municipalities
- Regional Districts
- Regional County Municipalities
- Rural Municipalities
- Special Areas



3 YEAR WARRANTY

- This warranty is offered directly to the qualifying agency without the requirement to involve the motorized equipment supplier or Dealer.
- After a request has been filed, all transportation costs and freight arrangements will be covered by WBM. WBM will also ship replacement parts directly to the Agency at no cost.
- The WBM attachment may be seasonally removed and re-installed with no effect on the warranty coverage as long as the same carrier is used. If the attachment is installed on a different carrier, the warranty coverage shall revert to the existing standard WBM coverage.
- Please note: proper care must be taken to ensure product does not damage during off-season storage, which may void warranty.



3 YEAR WARRANTY

PRODUCTS INCLUDED IN THE 3-YEAR WARRANTY PROGRAM*:

- Frame Mounted V-Box or U-Box Sander
- Slide-In V-Box or U-Box Sander
- Truck Mounted Snow Wing
- Hydraulic Two-Way Plow
- One-Way Plow
- Lift Groups

*SUBJECT TO CHANGE



LIFETIME WARRANTY

LIFETIME WARRANT FOR SNOW REMOVAL/ROAD MAINTENANCE ATTACHMENTS APPLICABLE TO GOVERNMENT AGENCIES.

WBM will cover all its manufactured products for unlimited time from date of purchase against defects in workmanship and material.

Government Agencies Include:

- Municipal Districts
- Counties
- Territorial Districts
- Regional Municipalities
- Regional Districts
- Regional County Municipalities
- Rural Municipalities
- Special Areas



LIFETIME WARRANTY

- The Lifetime Warranty will be administered directly between the Governmental Agency and WBM, and covers unlimited usage of the snow removal/road maintenance products from the date of sale.
- After a Lifetime Warranty request has been filed, all transportation costs and freight arrangements will be covered by WBM. WBM will also ship replacement parts directly to the Agency at no cost.
- If same carrier is used, seasonal removal and re-installation of all WBM attachments will have no effect on the Lifetime Warranty coverage. If the attachment is installed on a different carrier, the warranty coverage will revert to WBM's existing standard warranty.
- Please note: proper care must be taken to ensure product does not damage during off-season storage, which may void warranty.



LIFETIME WARRANTY

QUALIFYING PRODUCT SUITE*

Motor Grader

- Masted Snow Wings
- Mastless Snow Wings
- Straight Blades
- Hydraulic Angle Blades
- Manual Angle Blades
- Vee-Plows
- Lift Groups

Wheel Loader

- Snow Buckets
- Hydraulic Angle Blades
- U/V Angle Blades
- Ice Scrapers
- Straight Blades
- Snow Blades

Motor Scraper

- Vee-Plows

* Subject to change with prior notice.



THANK YOU

