

# Asset Management and Online Mapping

## Town of Sedgewick Village of Forestburg

AMSA Fall Convention, Edmonton, Alberta

15 November 2016

Dianne Michalak

[3DMM.ca](http://3DMM.ca)

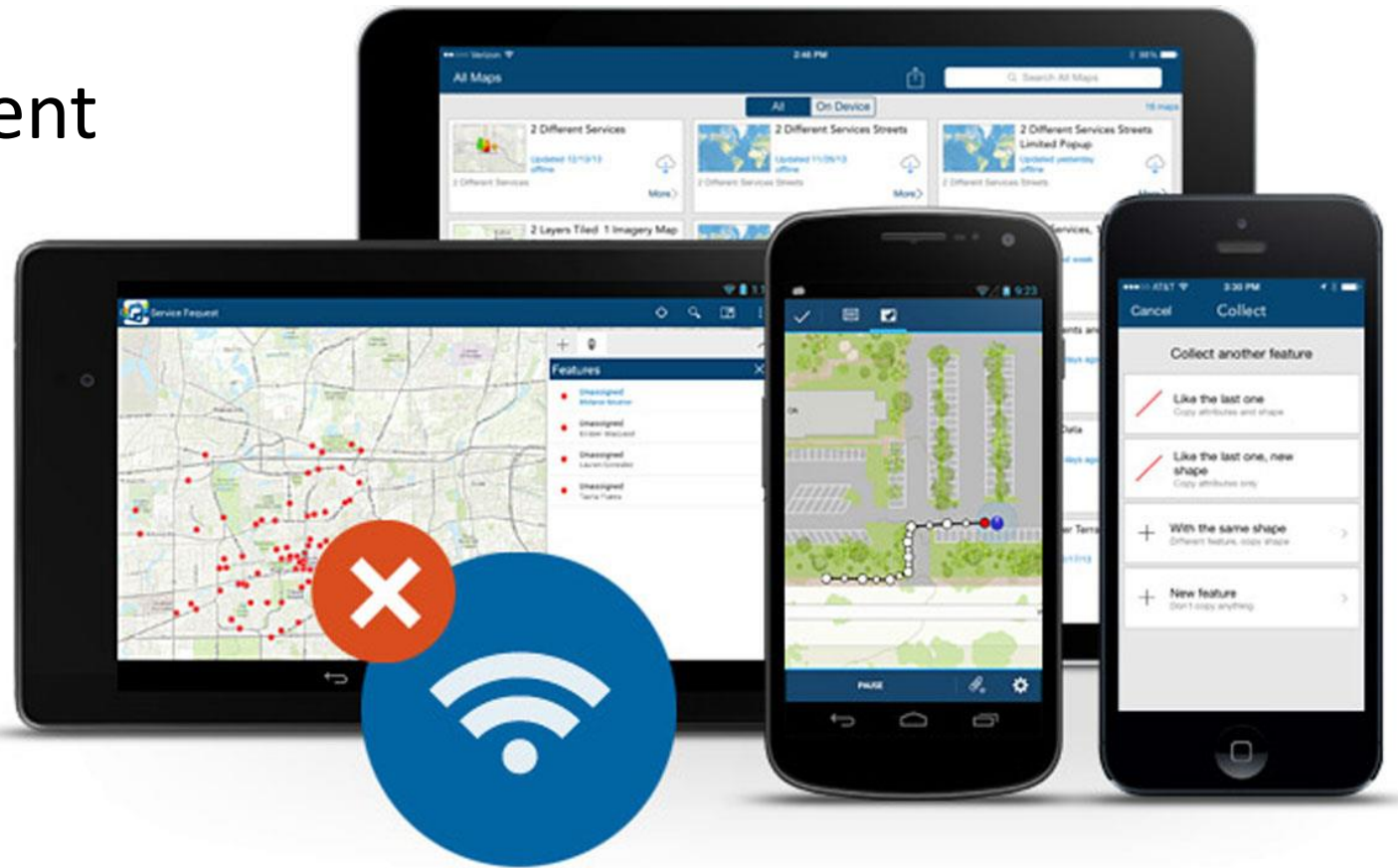




# 3DMM Solutions



ArcGIS Online  
Insight into Asset Management  
Digital Documents  
Data Integration  
Mobile Mapping  
Asset Inventory  
Photo Inventory  
Virtual Tours





# Insight - SSW



OpenDrainFor20161028

CURForestburg20161028

Drop Curb

No Curb

Rollface

Rollface Mono

Straight Face

Straight Face Mono

STForestburg20161028

Sidewalk

Street

Intersection

Backlane

Corner

Swale

Parking Lot

Other

Athletic Track

Bike Path

Walking Path

Boulevard

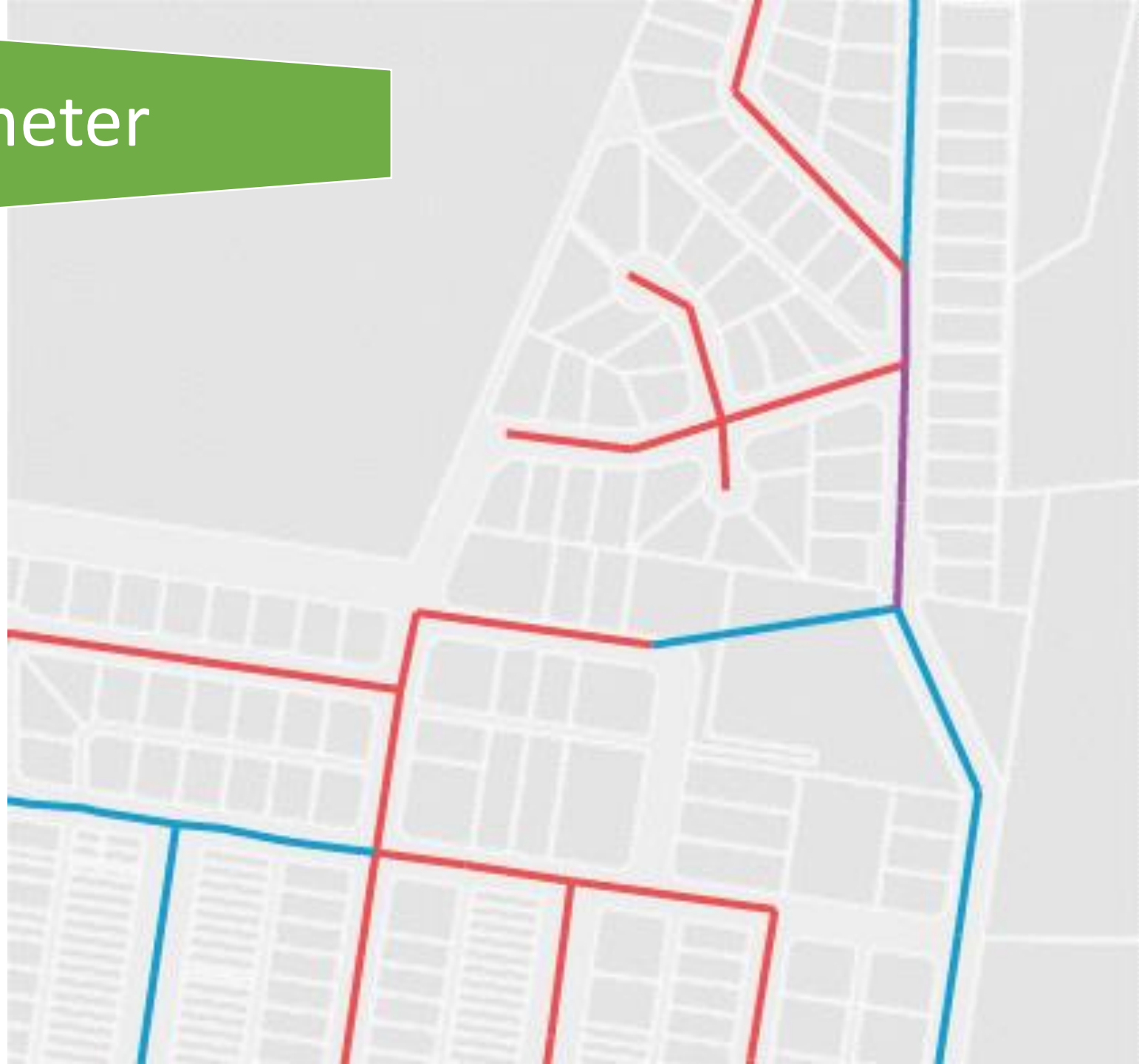


Insight – Roads and Signs


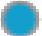



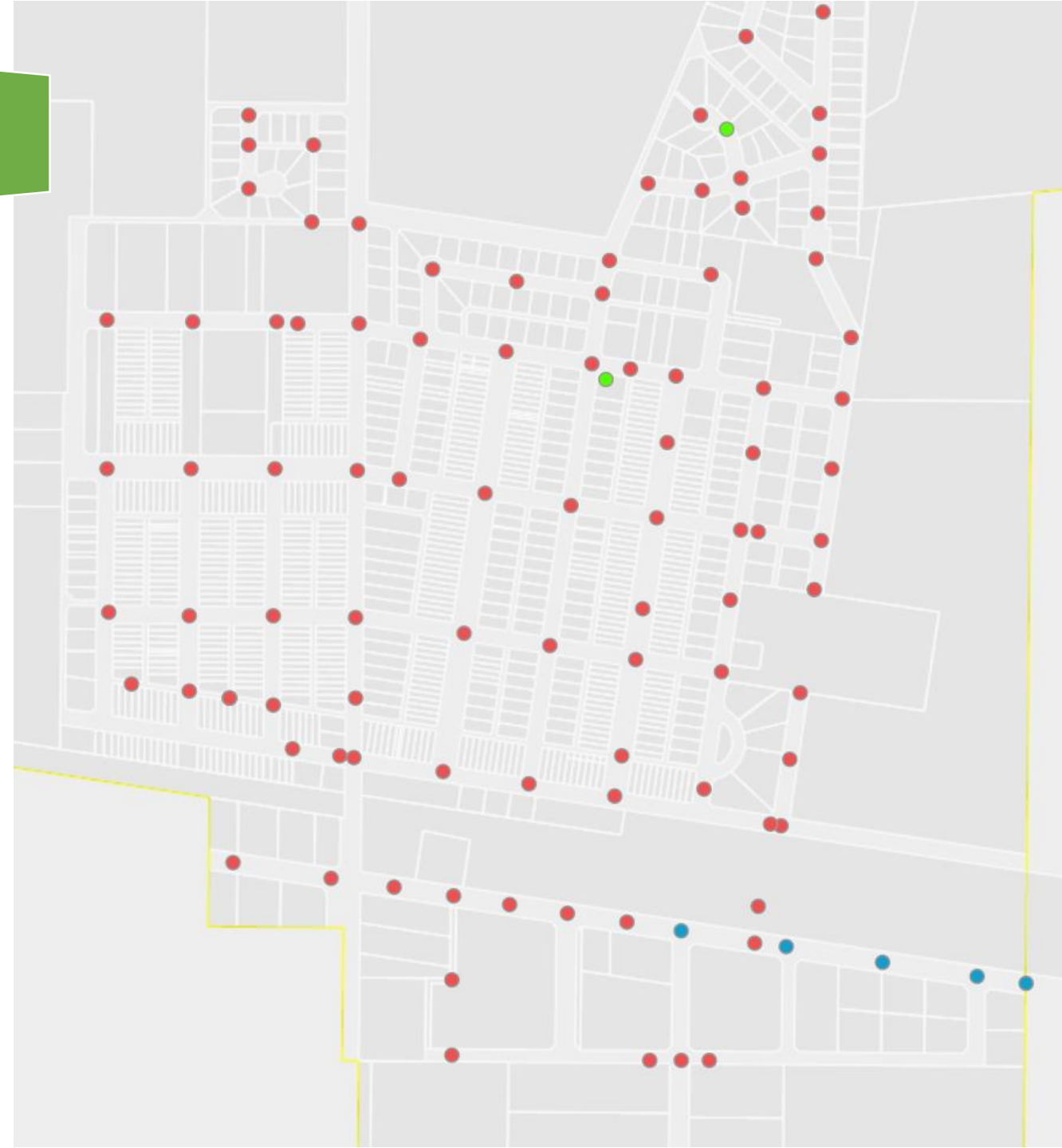
# Mains by Diameter

## SANITARY Gravity Main



# Confirm Assets

- ☒ SANITARY Manhole
- 
-  Confirmed
  -  Unconfirmed
  -  Does Not Exist





# Air Photo Basemaps

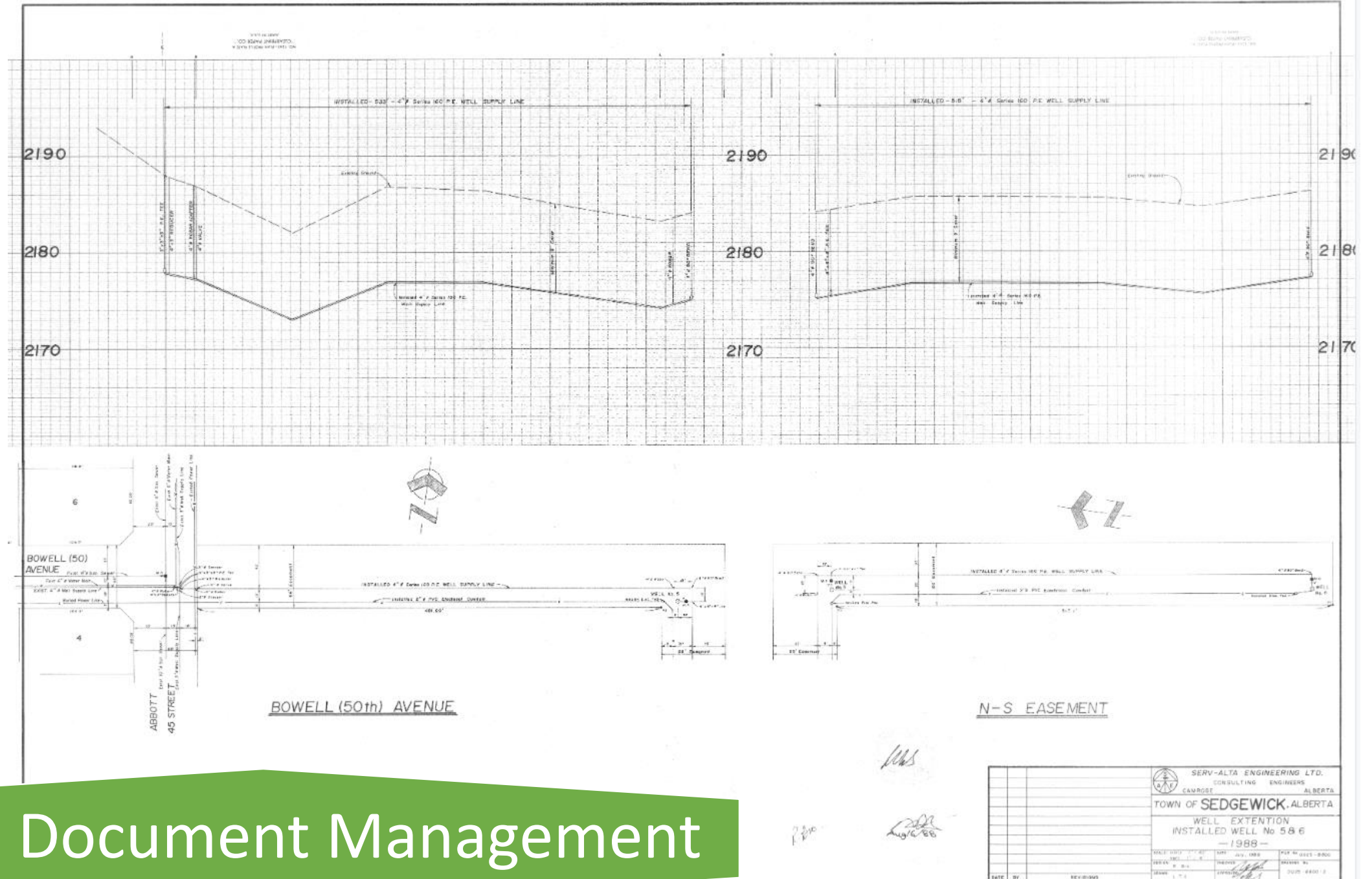


# Digital Document Management

## 0025\_8800\_2

Document Link	<a href="#">More info</a>
Sanitary Info	
Water Info	DataEntered
Storm Info	
VaultCode	A3
PlanYear	1988
Title	Well Supply Line
dwgIssue	AsBuilt
DrawingIssuedDate	19880701
FileNumber	0025_8800
DrawingNumber	0025_8800_2
Damage	SMALL TEARS

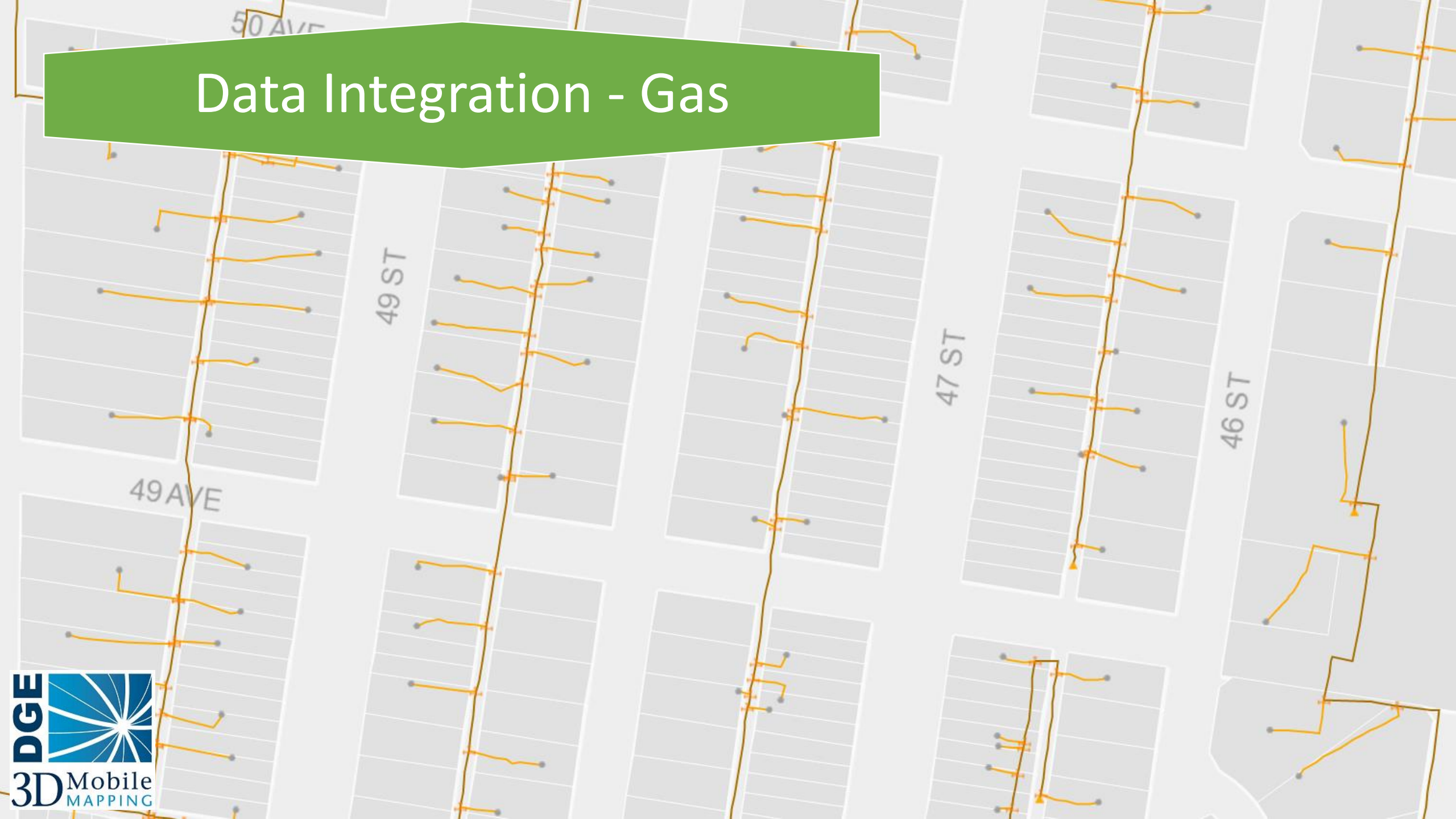
[Zoom to](#) [Get Directions](#) [Edit](#)



Digital Document Management

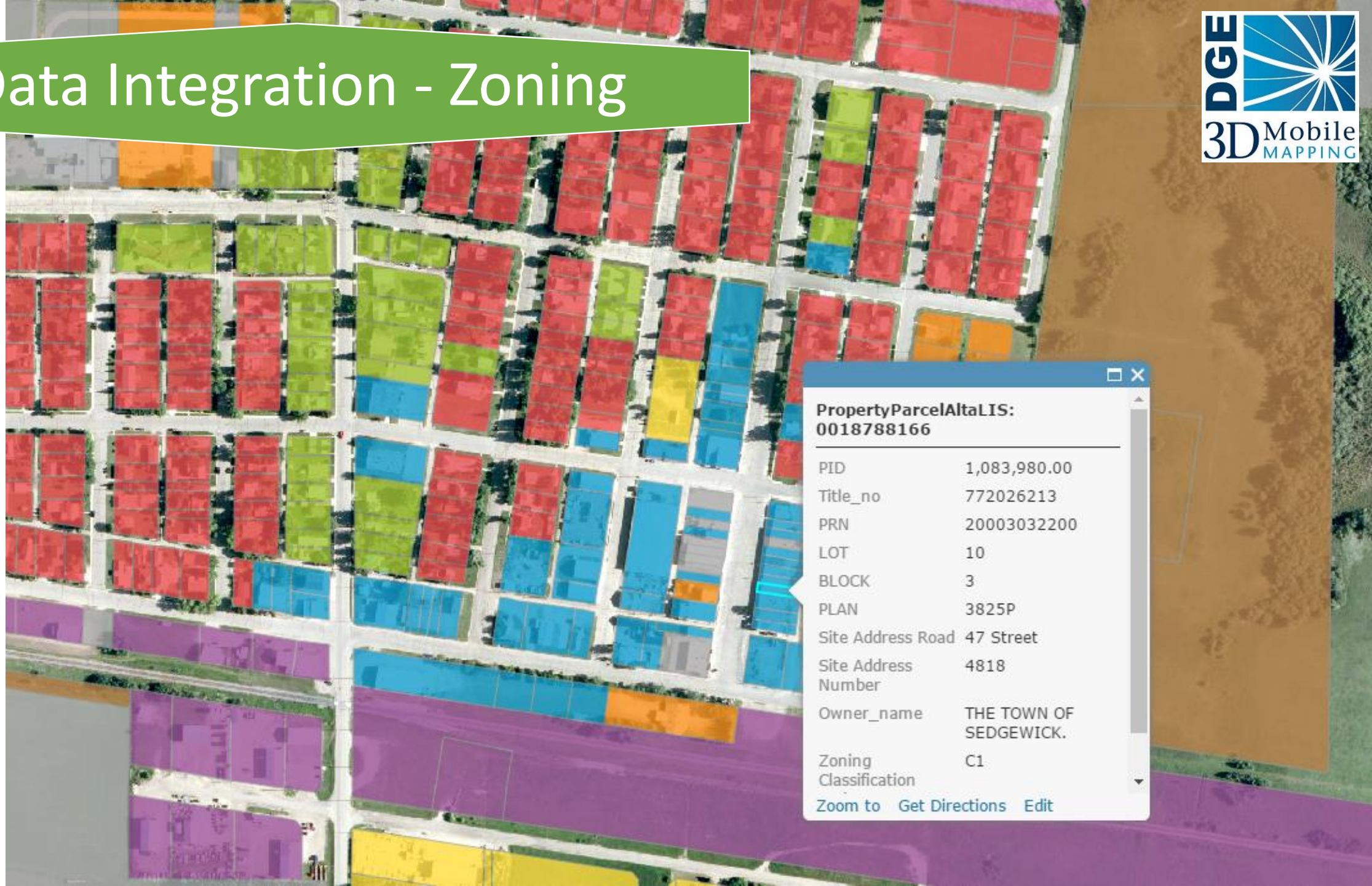


# Data Integration - Gas





# Data Integration - Zoning



PropertyParcelAltaLIS:  
0018788166

PID	1,083,980.00
Title_no	772026213
PRN	20003032200
LOT	10
BLOCK	3
PLAN	3825P
Site Address Road	47 Street
Site Address Number	4818
Owner_name	THE TOWN OF SEDGEWICK.
Zoning Classification	C1

[Zoom to](#) [Get Directions](#) [Edit](#)



# Mobile Mapping

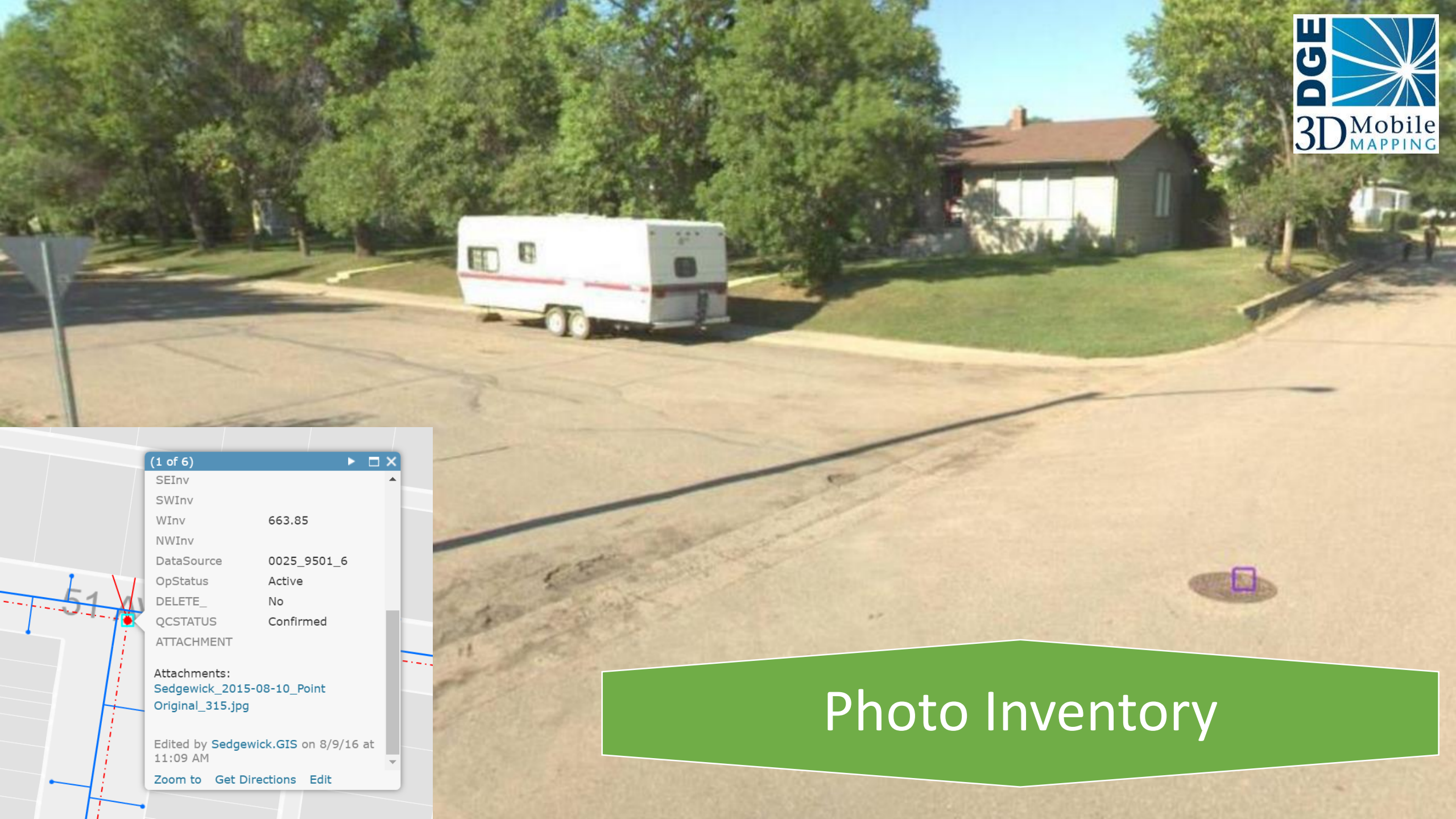




# Mobile Mapping







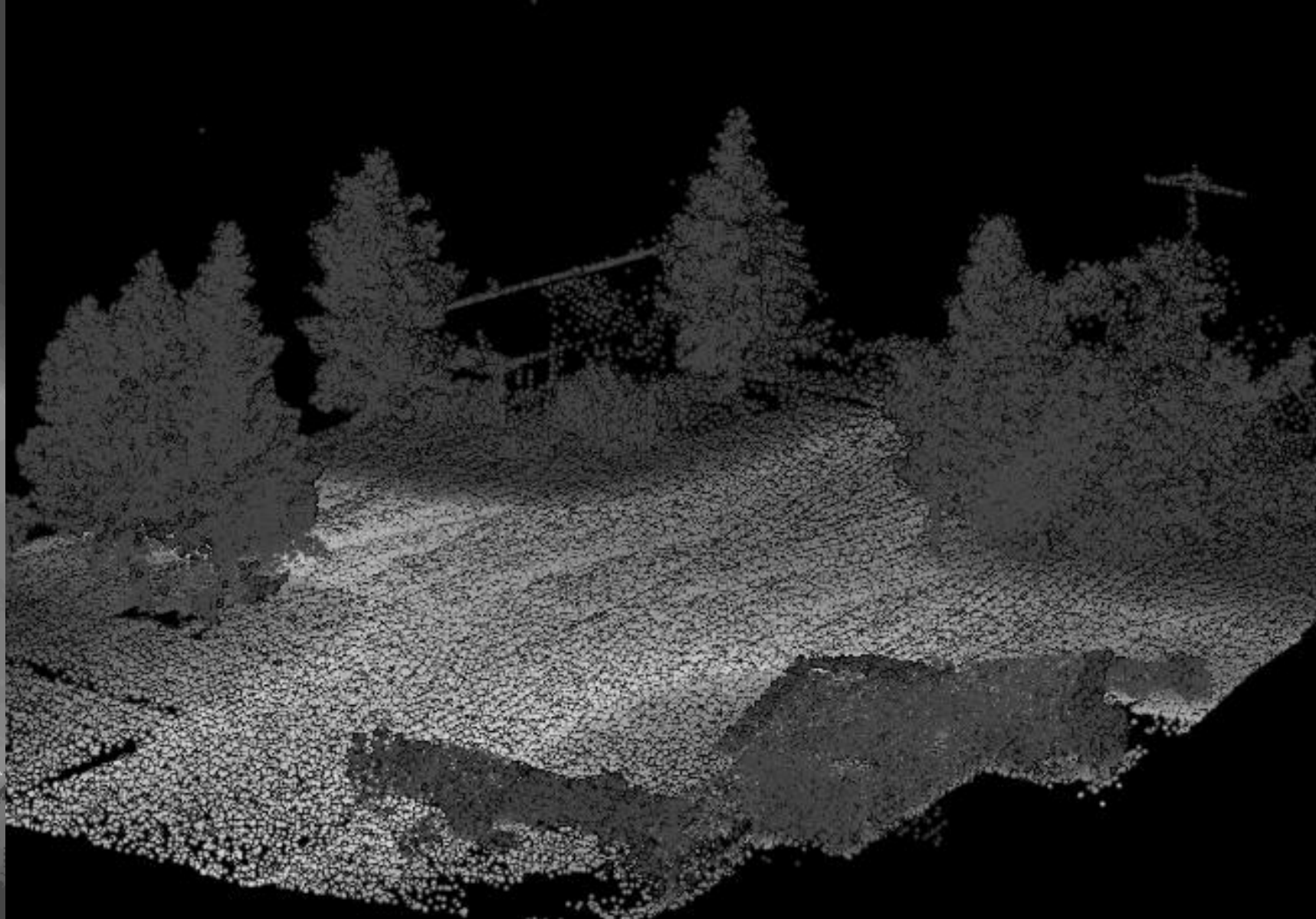
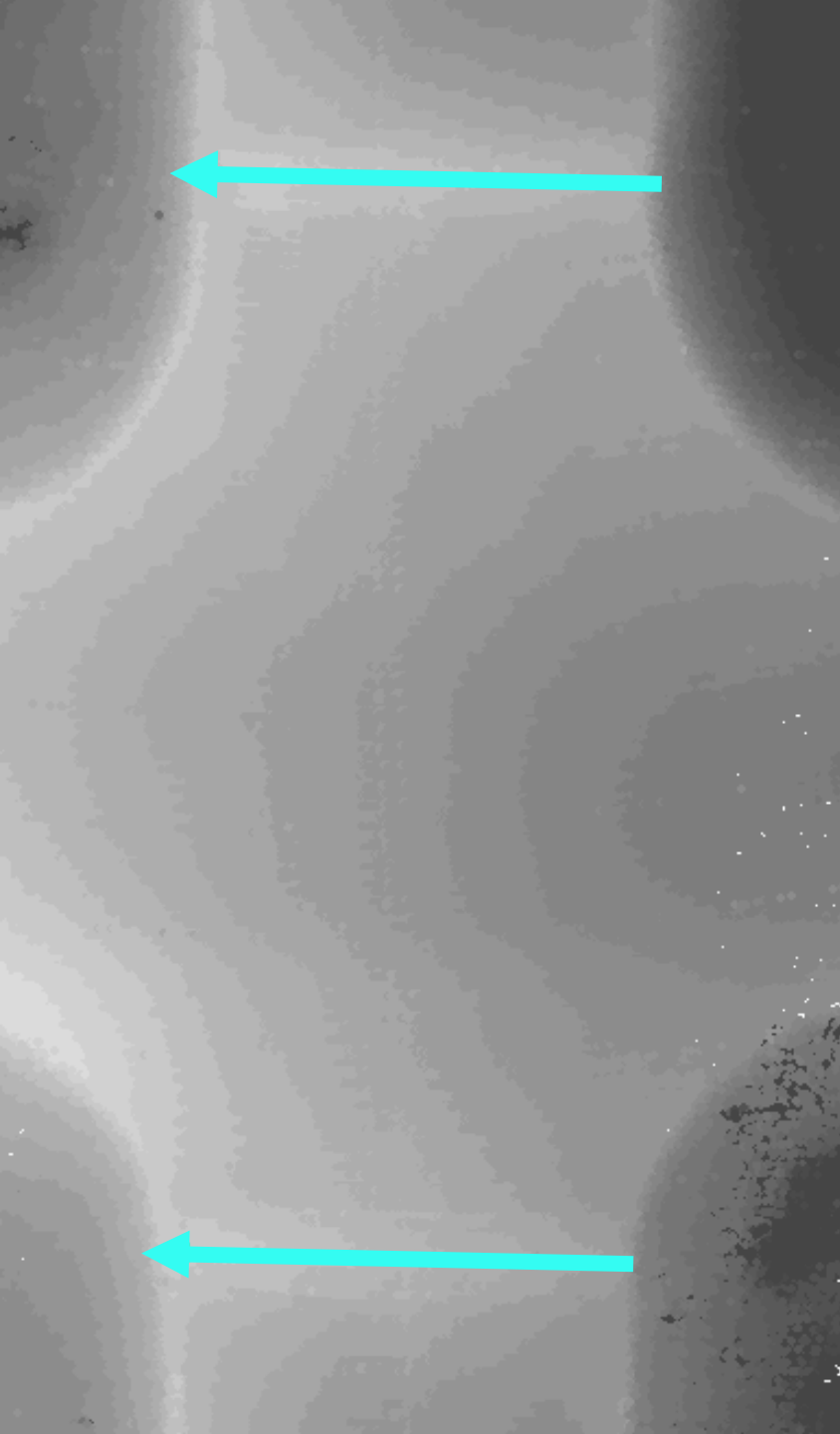
(1 of 6)

SEInv	
SWInv	
WInv	663.85
NWInv	
DataSource	0025_9501_6
OpStatus	Active
DELETE_	No
QCSTATUS	Confirmed
ATTACHMENT	
Attachments:	
<a href="#">Sedgewick_2015-08-10_Point</a>	
<a href="#">Original_315.jpg</a>	
Edited by <a href="#">Sedgewick.GIS</a> on 8/9/16 at 11:09 AM	
<a href="#">Zoom to</a> <a href="#">Get Directions</a> <a href="#">Edit</a>	

# Photo Inventory

# Curb Inventory





## Drainage Inventory



# Virtual Tour



# Lessons Learned

Training  
Hardware  
Wifi  
Buy in  
Budget cycles











*Thank you*

