



**LAC STE. ANNE COUNTY**



# County Overview

The County: **Current Statistics**

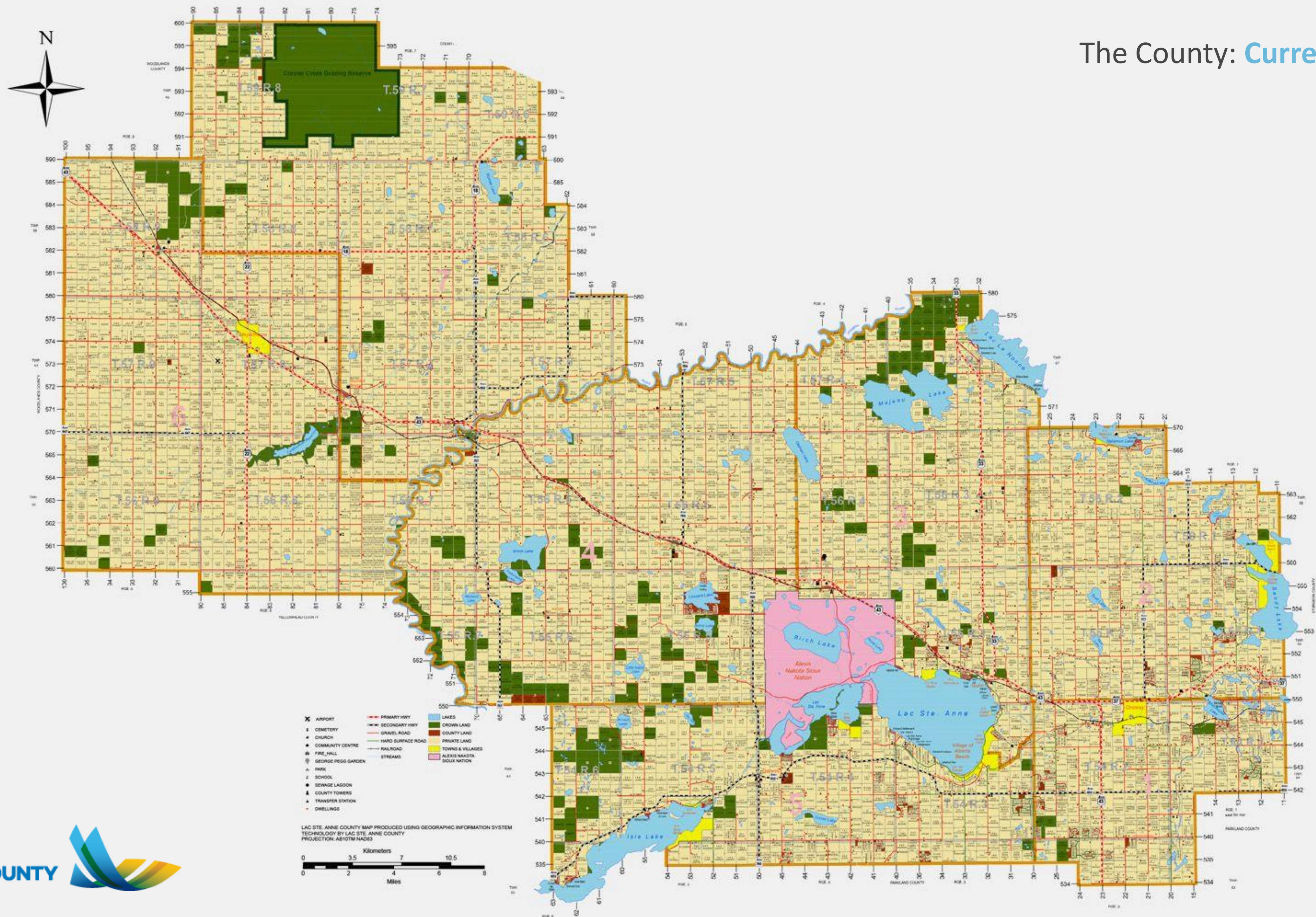
## Encompasses:

- 81 Subdivisions
- 8 Hamlets

## Other Municipalities Within County Boundaries:

- 12 Summer Villages
- 1 Village
- 2 Towns







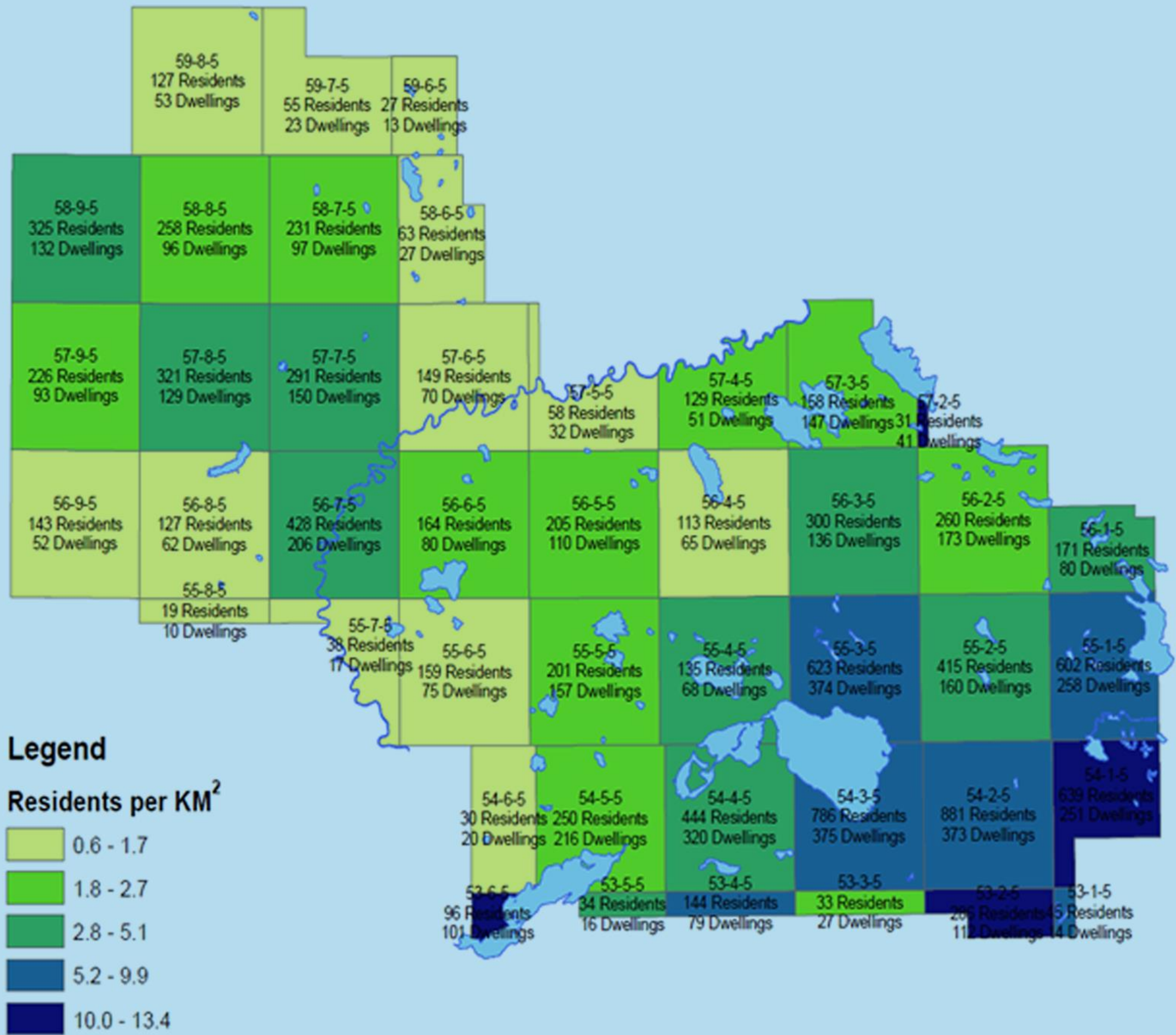
---

## The County: **Current Statistics**

- Population 10,260
- Encompasses 300,422 hectares (742,043 acres)
- 287,625 acres of arable farmland
- 354,825 acres of pasture
- 4,413 acres of wasteland, including titled lakes & swamps
- The remaining 95,180 acres developed



The County: **Current Statistics**

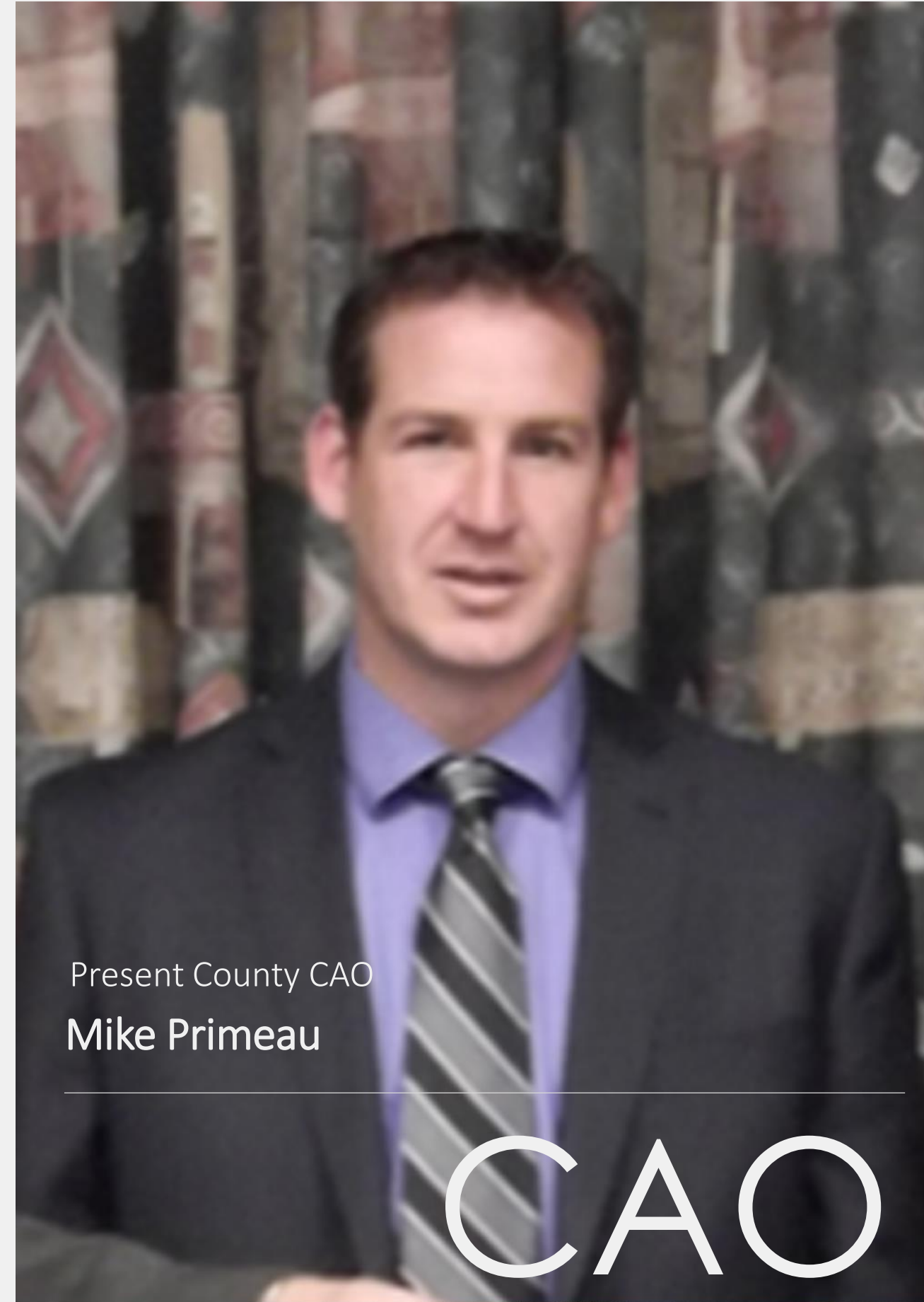


The population in Lac Ste. Anne County is divided into seven (7) divisions.

Much of the area west of the Pembina River is agricultural, and moving towards the east end of the County, residents /km. increases significantly.



## The County: **Direction and Leadership**



### Len Szybunka

In October 2012, County CAO Len Szybunka retired after 37 years of dedicated service.

### Mike Primeau

After serving in the position of Assistant CAO for 5 years, Mike accepted the position of CAO of Lac Ste. Anne County.



## Organizational Changes

Shortly after the commencement of Mr. Primeau's new appointment, internal changes were made to the organizational structure to provide better communication and direction amongst staff members.

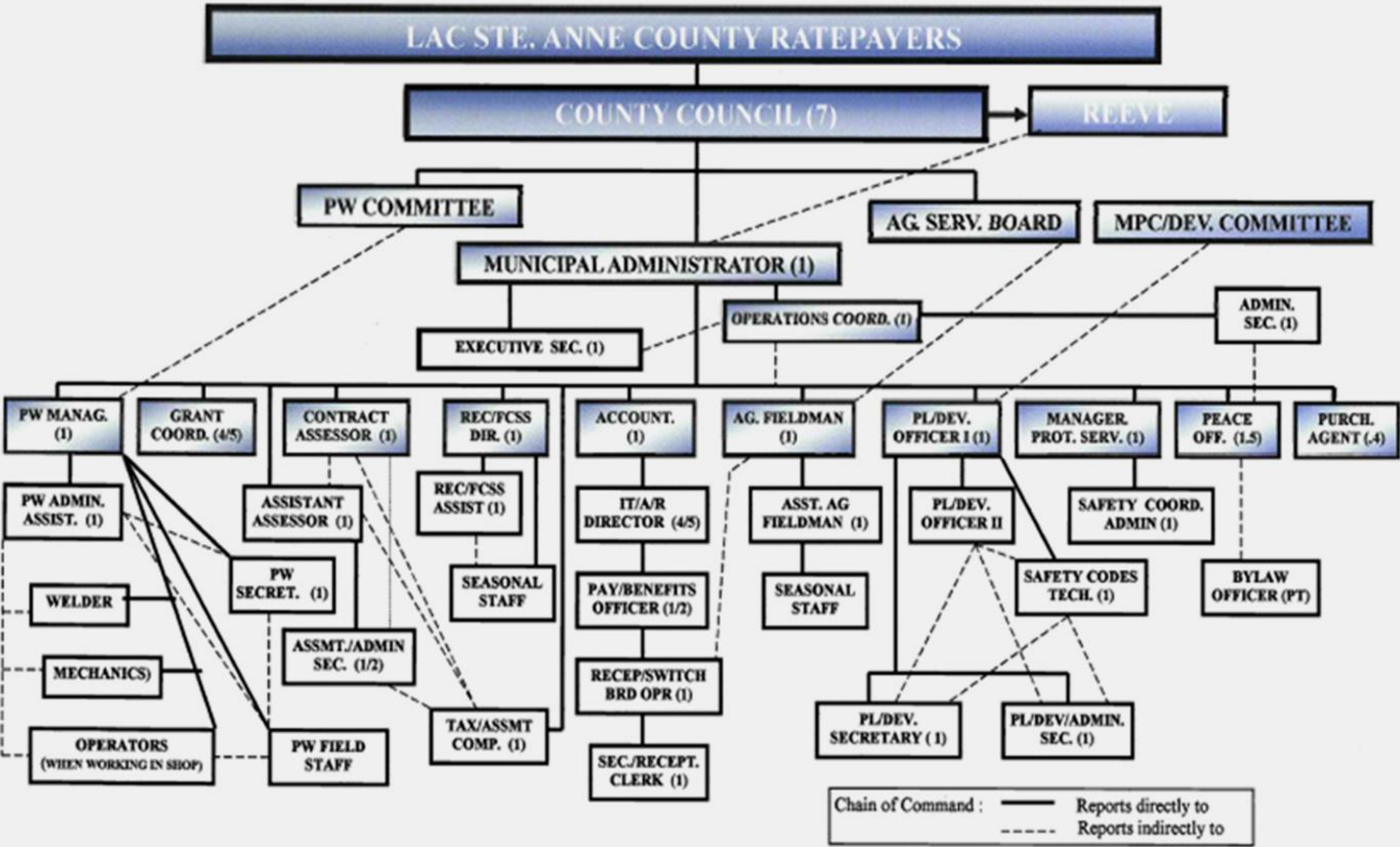
Three senior managers were promoted to newly created General Manager positions, and this has allowed for constant communication between all four senior level management staff.

Mike Primeau

**New County Leadership**

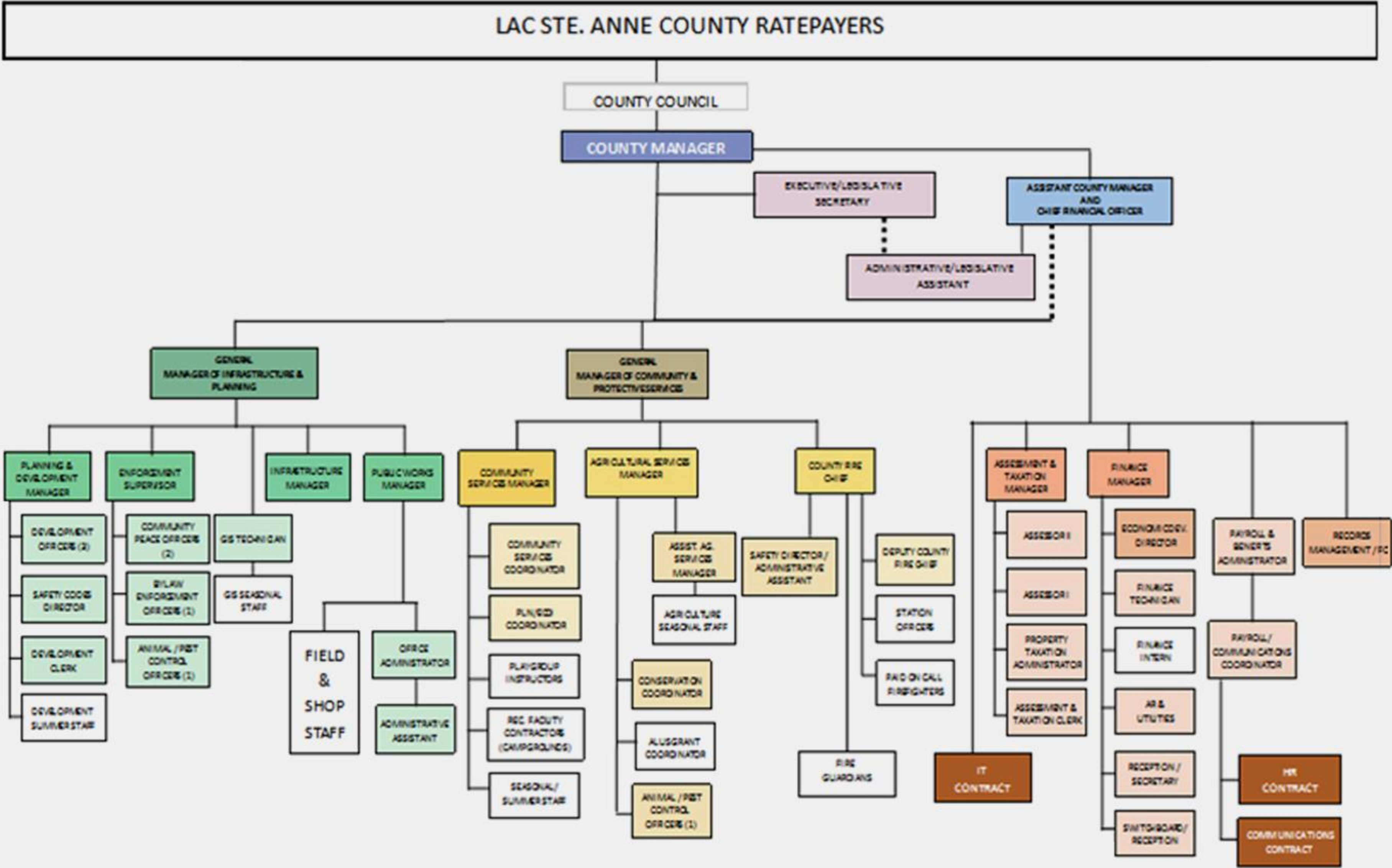


The County: Legacy Organizational Chart





The County: **New Organizational Chart**





## Projects and Accomplishments



### New Administration Building

Much-needed County administration facility is now nearing completion.



### County's 50<sup>th</sup> Anniversary

Community celebration to commemorate this important milestone.



### New East End Firehall

Designed to provide more efficient and valuable service to County residents..



# Projects and Accomplishments

## New Administration Building

Lac Ste. Anne County established a five (5) year borrowing plan for construction of a new administration building located adjacent to Hwy. 43 just east of Sangudo. It is anticipated the new facility will be ready for occupancy late 2016/early 2017.



## The County: 2015 and Beyond





## County's 50<sup>th</sup> Anniversary

In 2015, Lac Ste. Anne County celebrated 50 years of incorporation. To commemorate this important milestone, a community celebration was held August 29<sup>th</sup>, 2015 at the Sangudo Sports Grounds and Riverside Campground in which over 1,000 residents and visitors attended.







## The County: 2015 and Beyond

### County's 50<sup>th</sup> Anniversary

The celebration included many family activities, a kids carnival, community demonstrations, a farmer's/art market, show and shine, a skydiving performance and County Councillors served up a free BBQ. The event was made possible by many community and staff volunteers and enhanced through corporate sponsorship.



# Projects and Accomplishments

## New East End Fire Hall

In 2015, the County resolved to amalgamate the District 1 (Onoway) and District 2 (Alberta Beach) fire halls into one district to provide more efficient and valuable service to County residents.

This new station was relocated to just west of the Town of Onoway on Twp. Rd. 545.



# Property Taxes

The Facts and Figures

---





# Property Taxes

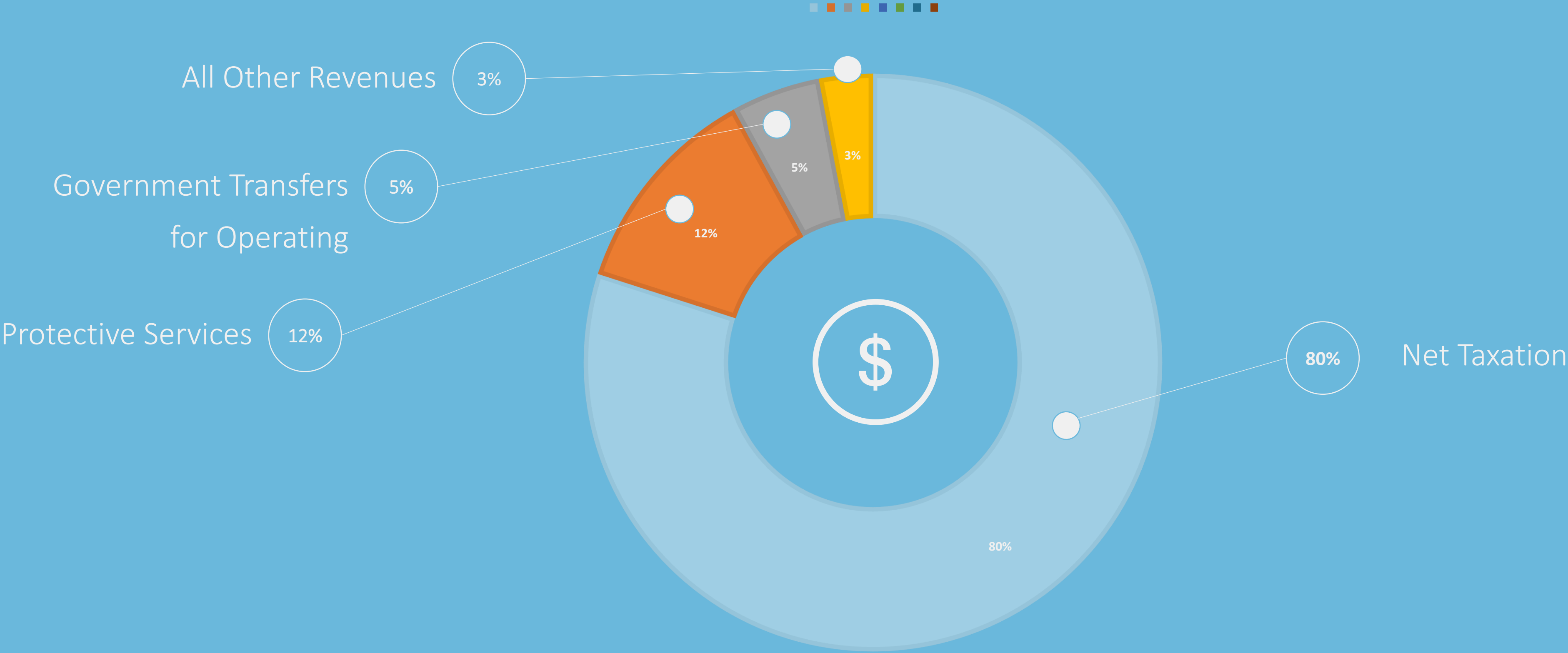
A primary source of revenue for governments and a big expense for homeowners, Lac Ste. Anne County being no exception.

The issue for many is that tax liability is fixed, while income is not.

How are County tax dollars spent?

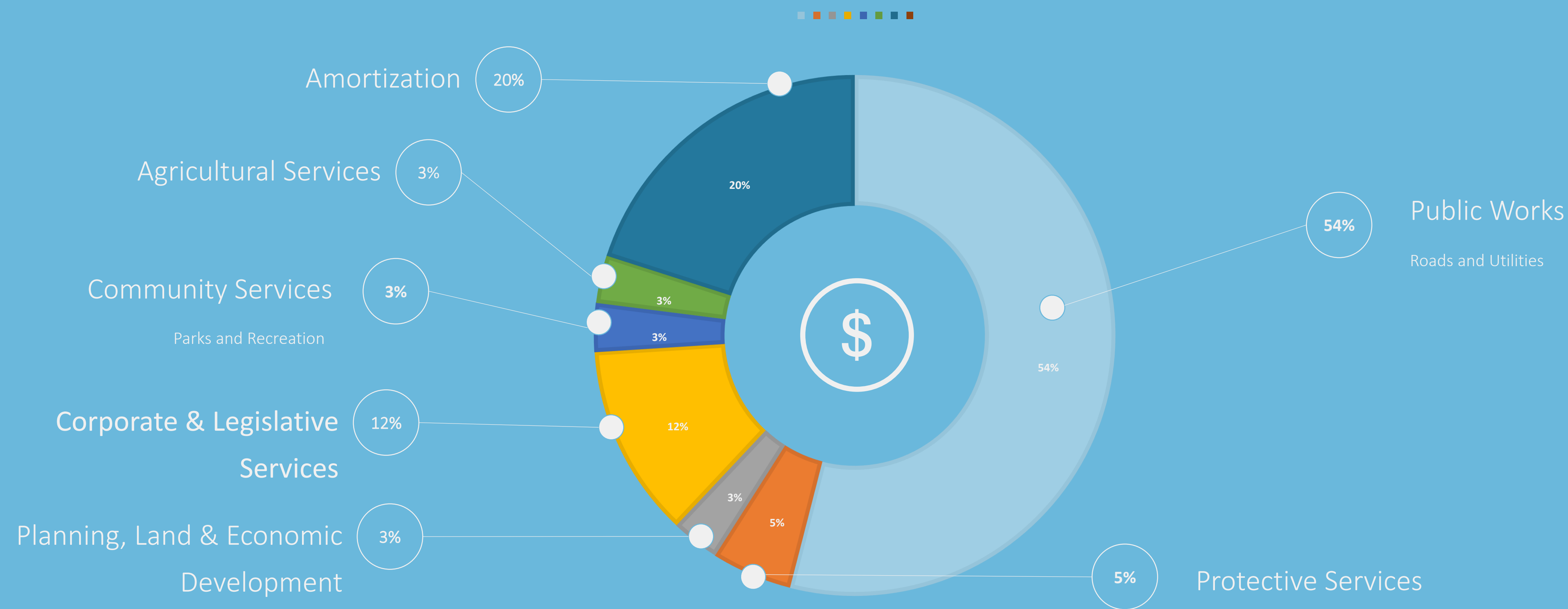


Revenue: Lac Ste. Anne County Revenue by Source in 2015



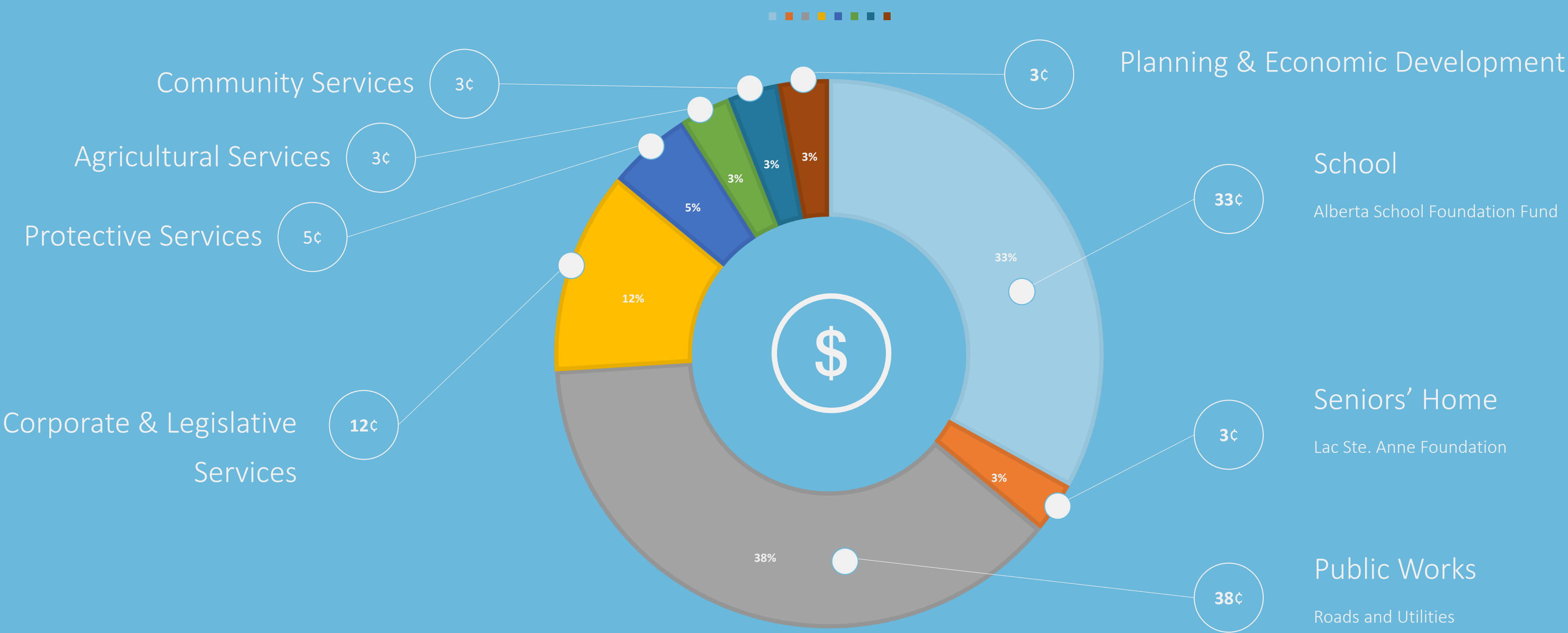


# Expense Breakdown: Lac Ste. Anne County Expenses by Function in 2015





# Tax Dollar Breakdown: How your residential and farmland tax dollar was spent in 2015





# Linear:

What sort of impact  
has this had?

Lac Ste. Anne County, like most rural municipalities has had a significant decrease in linear assessment as a result of the current downturn. Last year our linear taxes decreased by **\$867,961.63** (County portion).

This is significant for a municipality our size that does not have a lot of industrial development.





# Public Works

The Facts and Figures

---



## Public Works: General Overview

The Public Works Department, by definition is responsible for, or in the least greatly involved in all Lac Ste. Anne County projects, including but not limited to road maintenance, rehabilitation and construction, 217 bridges, water and wastewater, 8 transfer stations and the Mayerthorpe Airport.

Public Works also maintains responsibility for fleet management (Public Works, Fire and Protective Services, Agricultural Services and Community Peace Officer vehicles and equipment).

- The Department consists of 27 full time staff which is comprised of 1 manager, 2 office administrative staff, 19 maintenance operators, 1 handyman, 1 shop foreman/welder and 3 shop mechanics. During the spring/summer months, our staff is complimented with approximately 9-12 seasonal employees.
- The entire department is under the guidance and direction of the GM of Infrastructure and Planning (Joe Duplessie).
- The GM position also manages the Highway 43 East Waste Commission, the North 43 Lagoon Commission and the Darwell Lagoon Commission, of which the Public Works Department has involvement in as well.



## Public Works: Road Maintenance

County infrastructure is comprised of 1,870 kilometers of gravelled roads and 188 kilometers of hard surfaced roads.

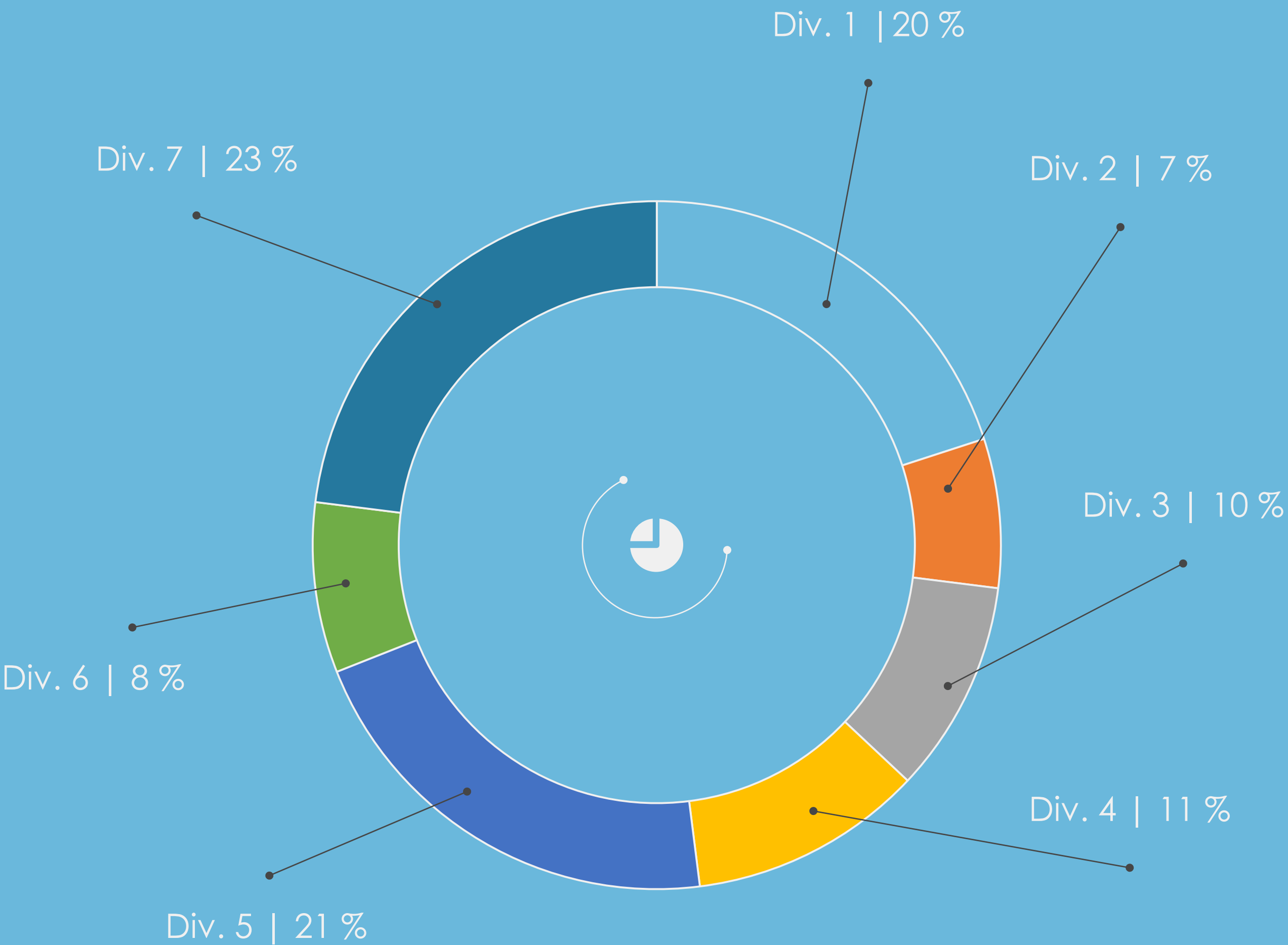
Twelve grader beats maintain these road surfaces. Of these twelve grader beats, ten average 179 kilometers in length, while two beats in the south eastern part of the County average only 116 kilometers due to higher traffic volumes (concentrated population).

- Lac Ste. Anne County budgets for gravelling roads based on a four year gravel rotation per Division. This is adjusted accordingly where road conditions and/or traffic patterns warrant otherwise.



Public Works: Road Maintenance

Kilometers of Roads  
Gravelled Per Divison Based  
on 4 Year Gravel Rotation





## New Gravel Equipment

In early 2015 the Public Works Department purchased two gravel trucks and four gravel trailers to compliment our gravelling program. The decision was made to reduce the amount of contract hauling costs that we were incurring while ensuring high priority areas are gravelled in an efficient and timely manner.





Subsequent to a full year of operation with the trucks and trailers (2015) the County saves approximately 67% per tonne/km on the cost of hauling. Of course some of this is attributed to the fact that we eliminate the extra cost of a loader operator and checker man.

We still hire some contract gravel haulers due to the fact that we strive to get the gravelling completed in a timely manner.



Beginning in late 2014, the County contracted an engineering company to complete an evaluation process of roads and bridges and develop a capital plan to guide the delivery of roadway and bridge rehabilitation in the highest priority over a 5 year period.

Roads were evaluated according to higher traffic volumes, inter-regional travel, higher development potential, surface deficiencies and possible safety issues.



- Bridge needs evaluated based on condition reporting.
- Estimated total capital expenditure for 5 years \$17.4 million.
- Also included 5 year subdivision hard surfacing plan completed by the GM of Infrastructure and Planning.



# The Plan:

The 5-year plan  
comprised the following  
criteria:

in order for a subdivision to meet the requirements of hard surfacing, an evaluation of assessment, total number of lots as well as improved lots, along with access to a hard surface road network within the subdivision was considered.





---

## Public Works: **Road Maintenance**

### Cold Mix Application

In 2016, the Public Works Department began subdivision cold mix application in a priority 1 subdivision for approximately 1,000 meters at a cost of \$125,000.



## Public Works: Road Maintenance



The Department also typically plans for 5 miles of new cold mix annually, 12 miles of shoulder pull, 43 miles of dust control (calcium) and 30 miles of cold mix repair.

Of course much of this work is dependent upon budget.





# Bridge Maintenance

The Facts and Figures

---



## Bridge Inventory:

Total local road bridge inventory includes 217 structures:

- 72 Standard Bridges
- 133 Bridge Sized Culverts
- 12 Major Bridges

Lac Ste. Anne County has a large amount of timber bridges compared to its peers.

Under the Municipal Government and Public Highways Acts, Municipalities must:

- Maintain bridge structures for safety and maximize the economic service life
- Construct new bridge structures to an appropriate standard





## Public Works: **Bridge Maintenance**

In 2015 the County tendered the repair of 7 bridges for \$870,788. This year we have tendered 7 repairs for \$288,686 and 3 major repairs for \$1,190,000.





---

## Public Works: Bridge Maintenance

One structure was replaced with a Jimbob bridge to eliminate closure. The cost of bridge infrastructure repair and maintenance is very high in rural municipalities.





# Solid Waste and Recycling

The Facts and Figures

---



## Public Works: **Solid Waste & Recycling**



The Public Works Department manages the solid waste functions which include (but are not limited to) garbage, recycling and spring clean up.

We operate 8 Transfer Stations with two operators, one laborer and three Transfer Station attendants.





## Public Works: **Solid Waste & Recycling**

Until recently, solid waste fees were collected through municipal taxation.

This meant that, under this system, people paid vastly different amounts for solid waste based on their home's assessment. It also meant that those unable to use the service (vacant, linear and commercial) still had to pay.



## Solid Waste Utility:

In 2016, the municipal taxation component for solid waste was eliminated and a new solid waste utility was created to address the inequities.

The cost of operating the utility was divided by the number of properties that are eligible to use the Lac Ste. Anne County Solid Waste System. This amounted to \$215 per user.

At the Council meeting on August 25th, 2016, County Council put in place a 50% subsidy program for 2016 Solid Waste Utility costs. For 2016, bills will be reduced to \$107.50 for users to adjust to the full cost of this service. This subsidy will be reviewed annually.





# Water and Wastewater

The Facts and Figures

---



Public Works operates and maintains the water and sanitary sewer systems and all related valves, manholes, catch basins, meters, lagoons and lift stations.

Other key responsibilities include water supply, treatment and distribution systems, water meter installation and maintenance, wastewater collection and treatment system operations and maintenance to regulatory compliance.





---

## Public Works: **Water and Wastewater**

Since 2010, the County has invested \$331,000 in relining sanitary sewer mains in the Hamlet of Sangudo. This process is a quick, effective and economical process in lieu of replacing pipes by open excavation, of aging infrastructure.

Lac Ste. Anne County has 6.7 km. of water mains, 18 km. of wastewater mains and .05 km. of storm drainage main (2014 figures).





# Points of Pride

The Facts and Figures

---



## Rochfort Bridge Viewpoint

In 2015, Lac Ste. Anne County was able to highlight one of its natural capital resources that also has historical significance. With generous corporate sponsorship from CN, the County was able to develop a picnic area at the Rochfort Bridge Trestle Viewpoint, located on the south side adjacent to Hwy. 43, just off of Range Road 80.



## Rochfort Bridge Viewpoint

Constructed in 1919, the Rochfort Bridge Trestle is the longest all-wooden trestle in western Canada and towers 110 feet high, measured from the water level of the Paddle River. Public Works assisted with the Viewpoint by levelling the area, installing fiber cloth, gravel and assisting with installation of the picnic table and commemorative stone.







---

The County: **Points of Pride**

## Rochfort Bridge Viewpoint

We encourage anyone travelling the area to take the time to stop in and check out this remarkable historical site!



## Campgrounds and Day Use Areas:

The County owns and operates three scenic campgrounds: Lessard Lake Public Campground, Sangudo Riverside Campground and the Paddle River Dam Campground.

The County campgrounds normally operate from May 15th to September 30th, annually.

The Public Works Department assists these areas providing grass mowing, garbage disposal, maintaining the water systems, assisting with maintenance/construction of new camping sites and snowplowing in the winter at the Lessard Lake Outdoor Ed Centre.





---

## The County: **Points of Pride**

### Paddle River Campground

Paddle River Campground has over 60 power/water sites available. There are seasonal sites available , and all other camping is available on a first come, first serve basis. There is a new washroom & shower facility as well as fire pits . A playground was added this year. On-site caretakers provide a small store with snacks, firewood and other items available.





---

The County: **Points of Pride**

## Lessard Lake Campground

Always a popular choice for seasonal sites, this campground had 24 seasonal campers in 2015. The process changed in 2016 with a “Seasonal Site Lottery.” Once the lottery was completed, all remaining seasonal sites were available on a first come, first served basis. There are proposed plans to add more sites to this campground in the near future.

.





The County: **Points of Pride**

## Lessard Lake Outdoor Educational Centre

This facility enjoys year-round popularity, and its usage increases each year. It's common for bookings to be made two or three years in advance. Main uses of this facility are family reunions, gatherings, weddings, and throughout the winter months the Centre is utilized for specialized Cadet training.





---

## The County: **Points of Pride**

### Sangudo Riverside Campground

This County campground continues to provide a beautiful camping experience alongside the Pembina River. Future anticipated improvements will see more redevelopment of the camping stalls, the installation of an office and a major renovation to the washroom/shower facility. On-site caretakers provide a small store with snacks, firewood and other items.





# Budgets

The Facts and Figures

---



## Zero-Based Budget:

In late 2015/early 2016, Lac Ste. Anne County resolved to initiate a “zero based budget” approach in moving forward

In every level of government, there are increasing expectations for governments to make informed choices about the services they provide to their citizens.

Zero Based Budgeting is an approach to planning and decision making that works opposite of the working process of traditional budgeting. Where in past department managers justified only the variances versus past years based on assumption that the “baseline” is automatically approved, ZBB is a method of budgeting in which all expenses must be justified annually.



## Lac Ste. Anne County: Budgets

As there are very different characteristic discrepancies between level of service provided by the Municipality in rural areas with regard to development, density of population and the state of infrastructure, the degree of cost reduction and/or increased service delivery will be dependent on Council.





## Lac Ste. Anne County: **Budgets**

This is a new approach for Lac Ste. Anne County and we anticipate that this will assess service levels in the face of competing priorities, and assist when facing fiscal restraint or positive economic growth.





Questions?

Lac Ste. Anne County