



# ***CAMROSE COUNTY***

***YOUR PLACE TO LIVE - WORK - PLAY***



▶ LOCATED IN THE EAST CENTRAL REGION OF ALBERTA (SE of EDMONTON)

▶ 8,458 RESIDENTS

▶ 10 COUNTY HAMLETS:

- ▶ ARMENA
- ▶ DUHAMEL
- ▶ KELSEY
- ▶ KINGMAN
- ▶ PELICAN POINT
- ▶ MEETING CREEK
- ▶ NEW NORWAY
- ▶ OHATON
- ▶ ROUND HILL
- ▶ TILLICUM

▶ 7 NEIGHBOURING COUNTIES

- ▶ Wetaskiwin, Ponoka, Lacombe, Stettler, Flagstaff, Beaver, Leduc

# COUNTY COUNCILLORS

7 DIVISIONS  
1 REEVE  
6 COUNCILLORS





# COUNTY DEPARTMENTS



- ▶ CAO: Paul King
- ▶ Corporate Services
- ▶ Finance
- ▶ IT
- ▶ GIS
- ▶ Planning
- ▶ Assessment
- ▶ Protective Services
- ▶ Safety
- ▶ Public Works
- ▶ ASB
- ▶ Seed Cleaning Plant
- ▶ Landfill
- ▶ Total Full time Staff = 70 employees



# INFO & FACTS

- ▶ Approximately 128.5 km long and 48.25 km wide
- ▶ 3,324.21 km<sup>2</sup> area
- ▶ Area of 338,900 hectares classified as pasture to very good arable soils and mixed farming attributes
- ▶ Currently utilize Cams 2 to monitor all our Public Works and Protective Service Vehicles



# INFO & FACTS

- ▶ Paved Roads = 42.37 km
- ▶ Gravel Roads = 2,557.25 km
- ▶ Ag Roads = 89.90 km
- ▶ 2,599.62 km's of maintained Roads
- ▶ PW Operating Budget = \$8,204,050





# PUBLIC WORKS DEPARTMENT

► Administration

## Assistant/Utilities Manager

### Manager of Public Work

### Graham Backus, C.E.T.

[gbackus@county.Camrose.ab.ca](mailto:gbackus@county.Camrose.ab.ca)



# SNOW PLOWING



- ▶ All plows are centralized at the Camrose public works shop

- ▶ We utilize 4 plow trucks ranging in size from a 1-Ton pickup chassis to a full size tandem axle International
- ▶ All sand is supplied through Carillion shop in Camrose





# SNOW PLOWING

- ▶ We also utilize a tracked skidsteer with hydraulic blade for tight spots and hamlet alleys



# NEW NORWAY GRADER SHED

- ▶ Share the building with the Battle River School Division
- ▶ Built in 2015
- ▶ Total Cost = \$553,530





# ROADS

GRADER BEATS

SHOULDER PULL PROGRAM

DUST CONTROL

ROAD CONSTRUCTION

# GRADER BEATS



- ▶ Road Foreman - Doug Wood
- ▶ 10 Grader Beats with 1 spare grader and 2 spare operators
- ▶ Approx. 150 miles/beat
- ▶ 4-5 day cycle to plow snow
- ▶ 8 day cycle for summer blading
- ▶ 8 Grader Sheds
- ▶ New Policy in 2017 for Driveway snow plowing
  - ▶ Charging \$40/time to a maximum of 4 per year



# SHOULDER PULL PROGRAM

- ▶ Crew Foreman - Ken Davy
- ▶ 12 Miles completed in 2017
- ▶ 2 Graders (JD 872 GP, JD 870 GP)
- ▶ Packer (Cat 815F)
- ▶ Dozer Cat
- ▶ Water truck (15,000L)
- ▶ Fuel Truck
- ▶ 2 Gravel Trucks



# Dust Control

- ▶ Trying out a new product: Clearview
- ▶ Applied at around 80°C
- ▶ Freezing point of 18°C
- ▶ Approximate life of 2 years depending on traffic volume
- ▶ Doesn't leech into the ditch
- ▶ Doesn't require water
- ▶ Meets Alberta Environment Spec's

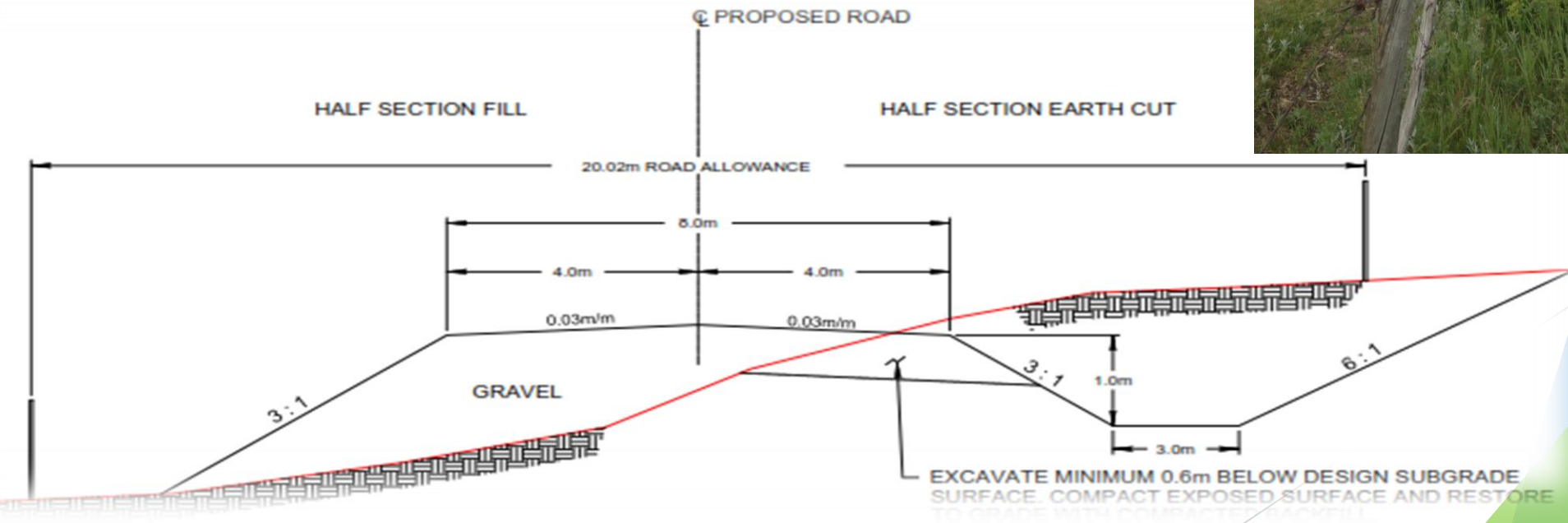




# ROAD CONSTRUCTION

## General:

- ▶ Prequalification for Contractors
- ▶ 6-14 miles/year of contracted road building
- ▶ 20m ROW's, no land purchase (only in special situations)



# ROAD CONSTRUCTION

- ▶ Backslope/ Borrow Agreements
  - ▶ County Supplied
- ▶ 8 meter road top
- ▶ 3:1 sideslopes, 3m ditch bottoms, 6:1 backslopes
- ▶ Crop Loss Payment
  - ▶ \$700/acre crop
  - ▶ \$350/acre pasture
- ▶ Construction \$267-\$275,000/mile





# COUNTY ISSUES FOR ROAD CONSTRUCTION

► Wetlands adjacent to our Roads

21 years After Construction



# BRIDGE CONSTRUCTION

Camrose County has been installing their own bridge file culverts to save on costs

All major and minor repairs are completed by Contractors

Currently need to replace/repair 23 existing bridges and more to come

Total of 113 Bridge Files

68 Culverts (CUL1, CULM)

34 PCS (Standard Precast Bridges)

1 PSR (Regular Prestress Bridge)

2 PT (Pony Truss)

1 SG (Jim Bob Bridge)

1 TH (Through Trusses)

6 TT (Timber Bridges)



# MAINTENANCE/ LABOUR CREW

- ▶ Labour Foreman - Lynn Levers
  - ▶ Snow Plowing, Culvert Installation, Signs, Ditching, Dead Animal/Garbage Pick-up
  - ▶ Bridge File Crew





# COUNTY BRIDGE REMOVAL AND 2000mm CULVERT INSTALLATION - BF 73474











## BF83185 - INSTALLATION OF BOX CULVERT







# Upstream Spring Thaw





# BF8899 - INSTALLATION OF DOUBLE 2400mm CSP's





# GRAVEL

- ▶ CRUSHING
- ▶ HAULING
- ▶ TESTING
- ▶ EXPLORATION
- ▶ SCREENING SALES



# GRAVEL PITS

- ▶ Currently have 4 active permitted gravel pits with a portion of 1 being primarily reclaimed
- ▶ Currently supply all gravel needs through County owned pits
- ▶ Actively seeking new gravel deposits to secure





# GRAVEL CRUSHING

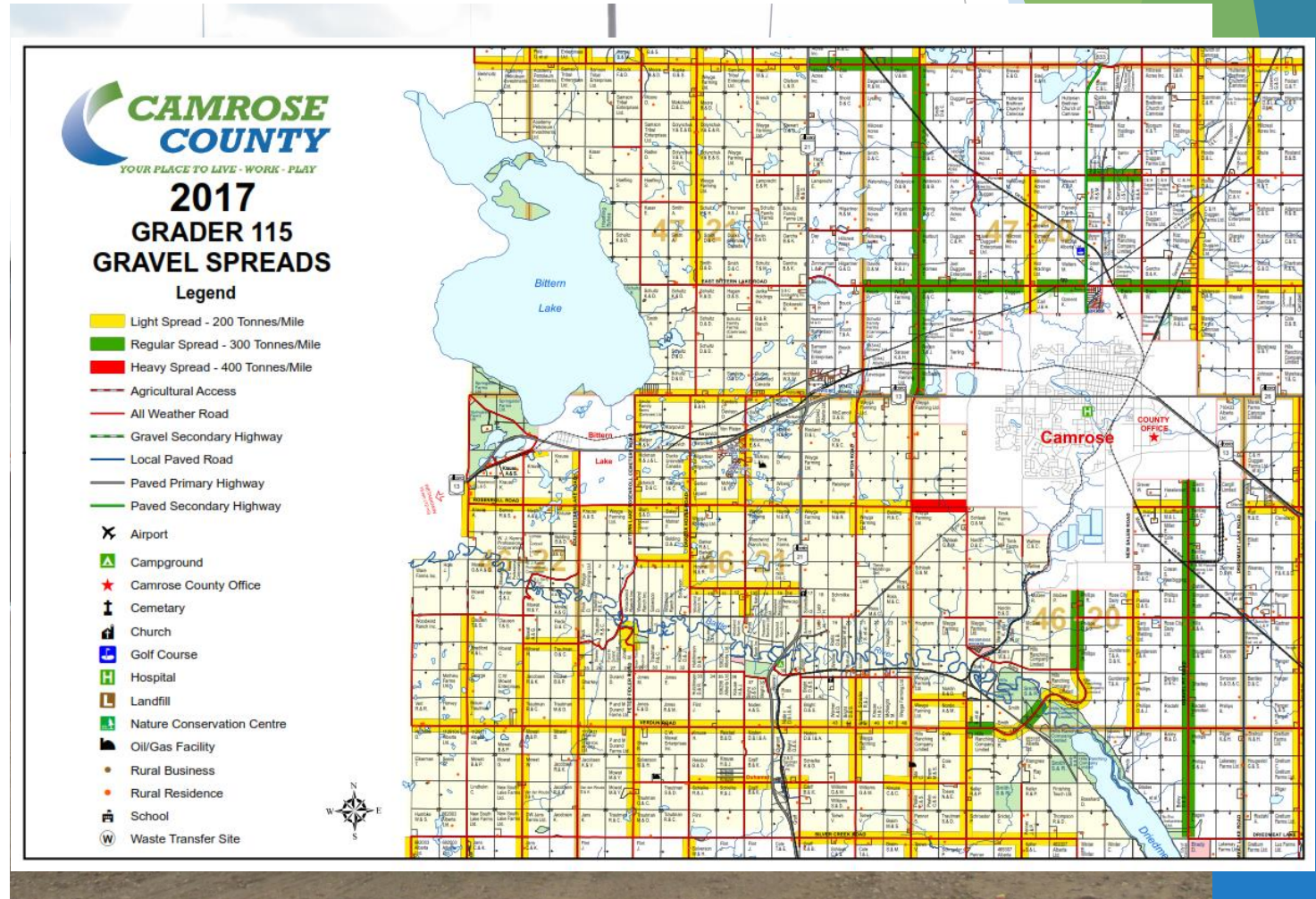
- ▶ All gravel crushing is completed by third-party contractors
- ▶ Gravel crushing tender contracts are compiled in-house
- ▶ All gravel testing services are provided by a third-party testing company hired by the County





# GRAVEL HAULING

- ▶ Camrose County has 2 gravel trucks with tri-axle gravel trailers
- ▶ Patch gravelling is done through summer
- ▶ Typically hire 8 private gravel haulers in winter to do approximately 525 miles of re-gravelling
- ▶ Currently we gravel at a rate of approximately 225 T/mile
- ▶ Still utilize a stationary scale with scale attendant to determine load-outs





# GRAVEL EXPLORATION

- ▶ Camrose County would be referred to as a “gravel-rich” County
- ▶ Staff are involved with sourcing out potential locations for new development locations and researching their viability
- ▶ Typically, site investigations are followed by preliminary test hole investigations and pending promising results, a formal exploration plan





# BLATZ PIT - RECLAIMED GRAVEL PIT

Before

After

1<sup>st</sup> year  
stocked  
4500 trout  
2<sup>nd</sup> year  
stocked  
2500 trout





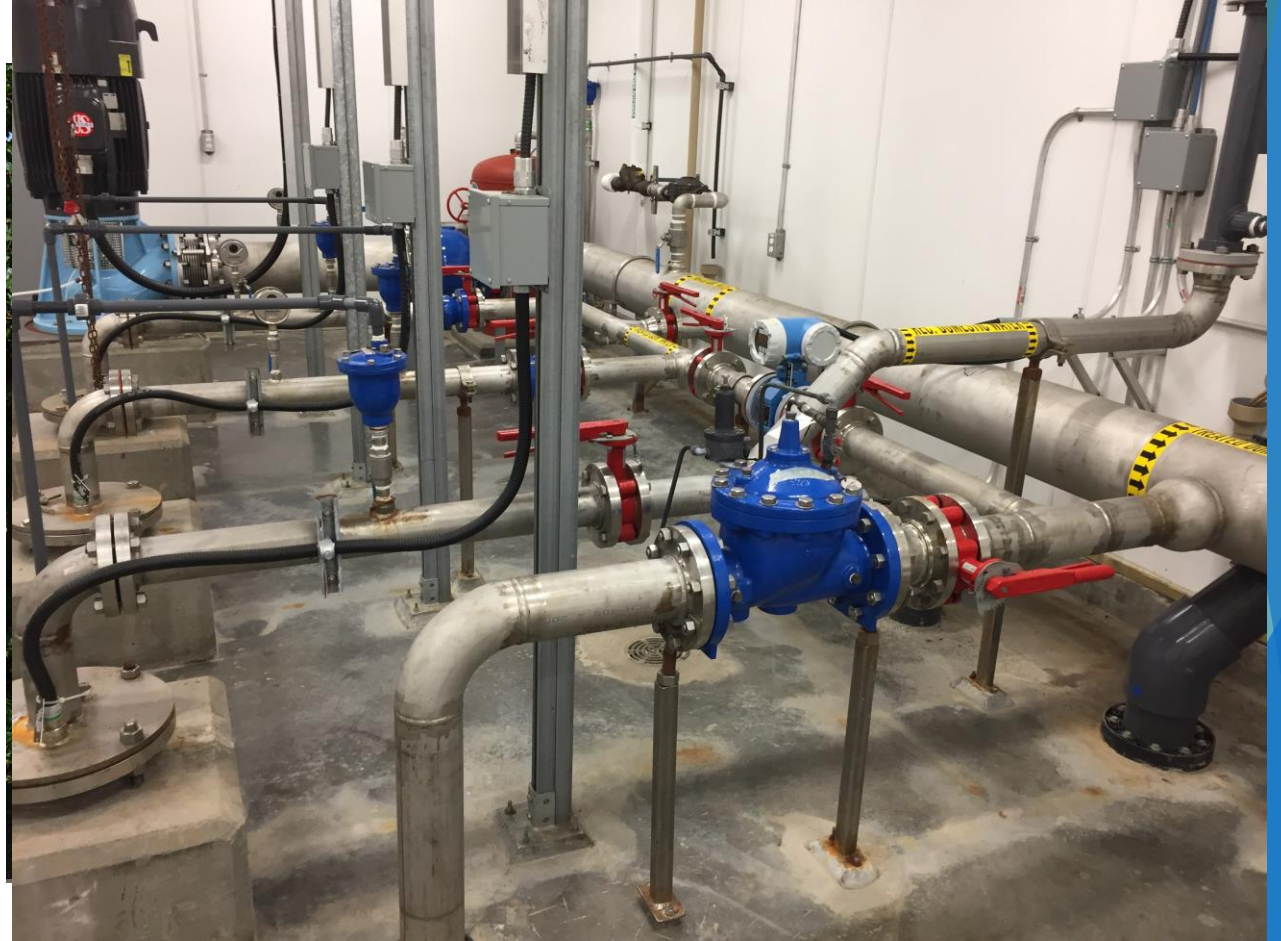
# UTILITIES

- ▶ WATER
- ▶ WASTEWATER
- ▶ REGIONAL PARTICIPATION



# UTILITY CREW & SYSTEM SUMMARY

- ▶ 1 Foreman - Curtis Smith
- ▶ 2 Utility operators
- ▶ 2 Potable water truckfills
- ▶ Operate water distribution systems for 5 hamlets and 1 Industrial Subdivision
- ▶ Operate 5 wastewater collection systems
- ▶ 4 wastewater treatment lagoons
- ▶ Contract work for surrounding villages
- ▶ Equipped with John Deere 410 rubber-tired backhoe and Vac Truck





# WATER SYSTEMS

- ▶ 5 Reservoir/Booster Stations that supply water to distribution systems
- ▶ Overall annual operational expenses of \$760,000
- ▶ Our County crew is responsible to complete excavation and repair work as required and currently undergoing the process to try and get to a level of preventative maintenance as opposed to repairs.





# WATER SYSTEMS

- ▶ The water currently supplied to Camrose County is all treated water. It comes from three different sources:
  - ▶ City of Camrose
    - ▶ Dried Meat Lake
  - ▶ Highway 12/21 Water Services Commission
    - ▶ Red Deer River
  - ▶ Capital Region Southwest Water Services Commission
    - ▶ North Saskatchewan River





# NEW NORWAY WATERMAIN REPLACEMENT

- ▶ During a watermain replacement project, hydrocarbons were encountered in the soils alerting staff that there may be an issue with installing regular PVC and SBR gaskets. In-house replacement was undertaken by Camrose County News.





# POTABLE WATER TRUCKFILL

- ▶ A new potable water truckfill was constructed off of the Highway 12/21 Water Services commission waterline in 2016 and was put into service in early 2017.
- ▶ This truckfill services surrounding residents and ag. businesses

## Truckfill Cost Summary

	Construction Cost	Engineering Cost	Total
MPE Estimate	\$ 711,725.00	\$ 86,450.00	\$ 798,175.00
Initial Low Tender	\$ 797,075.00	\$ 86,450.00	\$ 833,525.00
Actual Project Cost	\$ 565,621.63	\$ 122,498.60	\$ 688,120.23



QUESTIONS??