

CA-90 (EC-101) COLD POUR CRACK FILLER OPERATIONAL REALITIES/ SOLUTIONS



**PRESENTED BY:
MATTHEW ARNILL**

COLD POUR CRACK FILLER

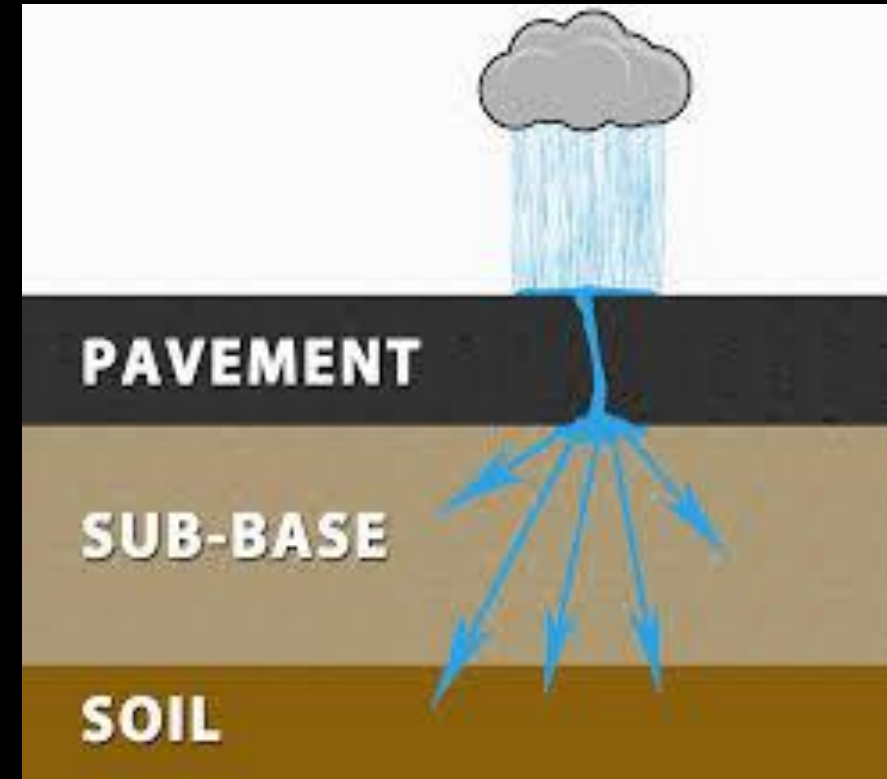
- **THE PLACEMENT OF ORDINARY TREATMENT MATERIALS INTO A LOW MOVING CRACK TO REDUCE THE INFILTRATION OF WATER AND REINFORCE THE ADJACENT PAVEMENT**
- **CA-90 (EC-101), HF-150/ SAND, MC-30, SPRAY PATCH**
- **LOW MOVING CRACKS (NON WORKING)**
- **LESS THAN (3MM/YR), GROW LESS THAN 1MM ANNUALLY)**



WHY CRACK SEAL?

“CRACK SEALING IS THE SINGLE MOST COST EFFECTIVE PREVENTATIVE MAINTENANCE TOOL AVAILABLE” –FHWA

- **MAINTAIN PAVEMENT STRUCTURE**
- **LIMIT FUTURE DETERIORATION, PREVENT POT HOLES**
- **PROTECT INVESTMENT**



COLD POUR CRACK FILLER

- **CRACKS WILL GROW OVER TIME.**
- **CAUSED BY: ASPHALT WILL SHRINK WITH AGE, THERMAL MOVEMENT, DEBRIS IN FACE OF CRACK, AND REFLECTIVE CRACKING (UNDERLYING JOINT)**
- **WILL OCCUR WHEN AC NO LONGER FLEXIBLE ENOUGH TO WITHSTAND TRAFFIC LOADING OR SEASONAL TEMPERATURE FLUCTUATIONS**



OPERATIONAL REALITIES/SOLUTIONS

- **PEOPLE: SKILLED YEAR ROUND AND MINIMAL SKILL/ SEASONAL STAFF**
- **NEED TO MAINTAIN ASSET TO BEST OF OUR ABILITIES WITH TOOLS AND FUNDING AVAILABLE.**
- **WHAT CAN WE ACCOMPLISH WITH SKILLS AND BUDGETS AVAILABLE TO US?**



- **CA-90/ PACKAGING/ SIMPLICITY**



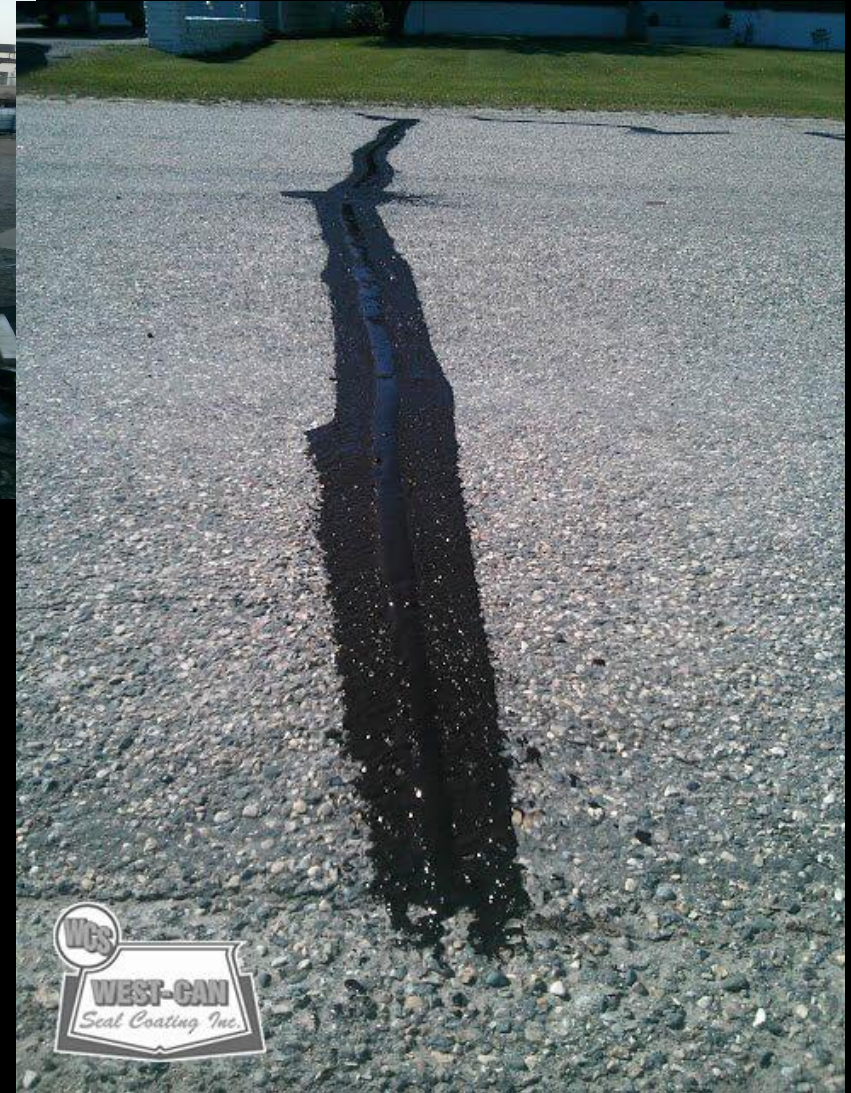
- **CA-90/ PACKAGING/ SIMPLICITY**



- **LOWER SKILLED CREW CAN SAFELY HANDLE AND APPLY COLD POUR CRACK FILLER MATERIALS**



- **BRIDGING THE GAP**



ASPHALT CRACK FILLER EQUIPMENT

RENT WEEKLY AND MONTHLY



WESTERN ASPHALT
products

WHAT YOU NEED:

- Truck capable of pulling a loaded trailer that weighs approximately 3500 kg (7800 lbs)
- Labour for application (recommended 2-4 staff)
- Ability to limit traffic access on freshly applied crack filler
- V shaped squeegee for spreading the applied material into the cracks

COLD POUR CRACK FILLER IS AVAILABLE IN "BULK"

- ✓ 1000 liter disposable totes
- ✓ 205 liter drums and
- ✓ 1000 liter tank and cage totes
- ✓ 20 liter pails



WESTERNASPHALT.CA



204-725-9538



info@westernasphalt.ca

The Math

- 1 tote = 1000L or 1 mt
- 1 cardboard disposable tote = \$1200.00 FOB Bruiderheim plus freight
- Freight from Plant to Municipal Yard \$50-\$250/ per tote depending on location and volume
- Assume Freight of \$100 per tote = \$1300.00 delivered
- Small Crack .2L/Lm $1000\text{L}/.2 = 5,000\text{Lm} = \$0.26/\text{Lm}$ material cost
- Medium Crack .3L/Lm $1000\text{L}/.3 = 3,333\text{ Lm} = \$0.39/\text{Lm}$ material cost
- Large Crack .5L/Lm $1000\text{L}/.5 = 2,500\text{ Lm} = \$0.52/\text{Lm}$ material cost

Questions?



MATTHEW ARNILL

2317-16TH STREET

DIDSBURY, AB T0M 0W0

O: (403) 335-9137

E: admin@west-cansealcoating.com

ORDERING/SHIPPING

DEAN ARNILL

55501 RANGE ROAD

BRUIDERHEIM, AB, T0B 0S0

O: (780) 796-3437

E: Arnill@westernasphalt.ca